

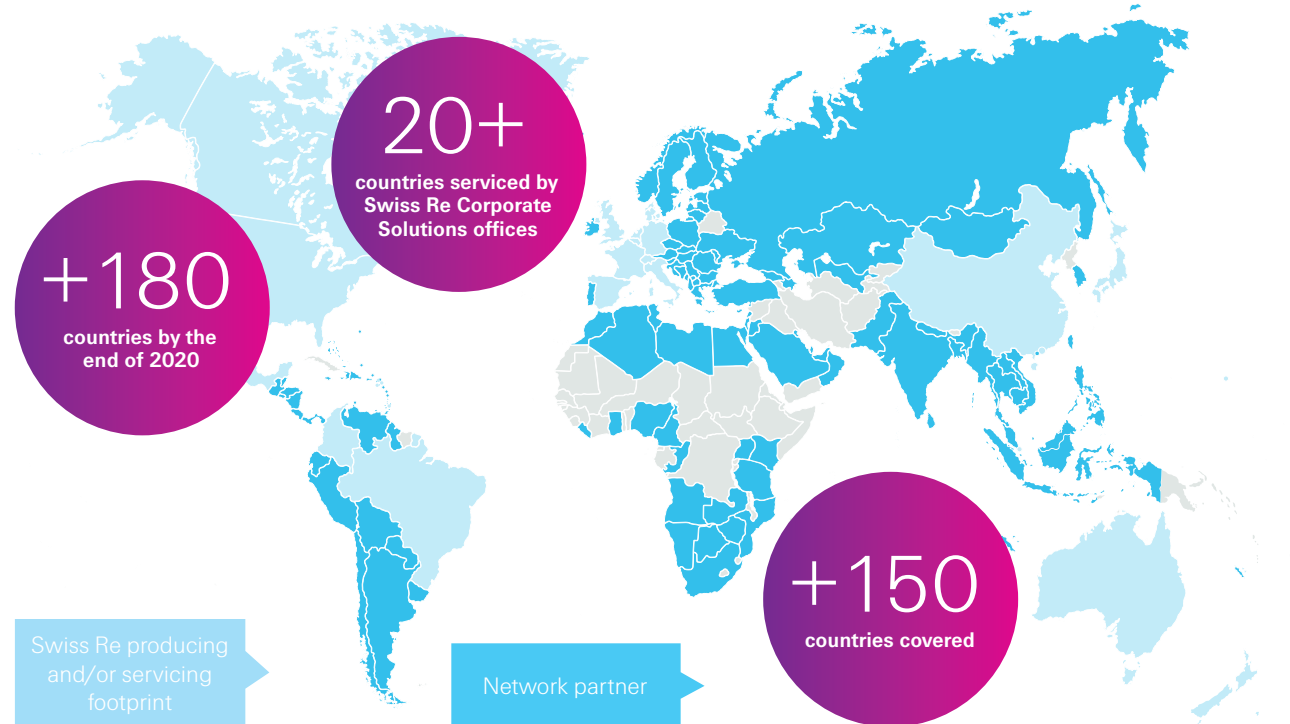
Advancing International Programmes Together

International programme solutions for directors & officers



Our network is getting stronger year on year

We live in a world of change, where globalisation and digitalisation, as well as social, environmental and regulatory shifts, are transforming the way we do business. Change brings new opportunities – and new and unexpected complexities too. We want to be there to help you successfully navigate the global risks you face today, anticipate the challenges of tomorrow and find the best solutions to protect your business every step of the way.



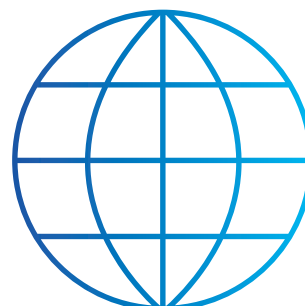
What makes our network unique?

- Dedicated international programme managers ensuring compliance, coordination and control.
- Carefully selected network partners leveraging longstanding relationships with Swiss Re, according to 3 criteria: operational capability, local credibility and financial stability.
- Integrated IT Platforms: we engage with our partners through our proprietary and integrated Network Partner Portal.
- Robust and integrated (re)insurance solutions in complex countries such as Brazil, Argentina, Malaysia and Indonesia. Extensive coverage in China maximising reinsurance through intelligent use of own office and network partner.
- We have selected our network partners to be able to offer a wide range of products. If a partner cannot offer a solution for a particular need we will work with them and you to fill the gap.

Our five pillars for service excellence: responsive, reliable and results focused

- 
International Programme Excellence
 Providing expert advice directly to customers and brokers focused on compliance, coordination and control
- 
Financial management
 Controlling and reporting on premium and claims flows around the world
- 
Global Network
 Maximising territorial coverage through a robust, well-managed network of local offices, leveraging our longstanding partnerships around the world
- 
Global Platforms. Simplifying Data, Work and Information Flow
 Our lack of IT legacy is a key advantage and it allows us to build a specialised technology platform to manage complexity
- 
Highly Talented People and Superior Processes
 Experienced people have designed superior processes and are committed to building a best in class proposition

150 years of knowledge and expertise in the global risks space

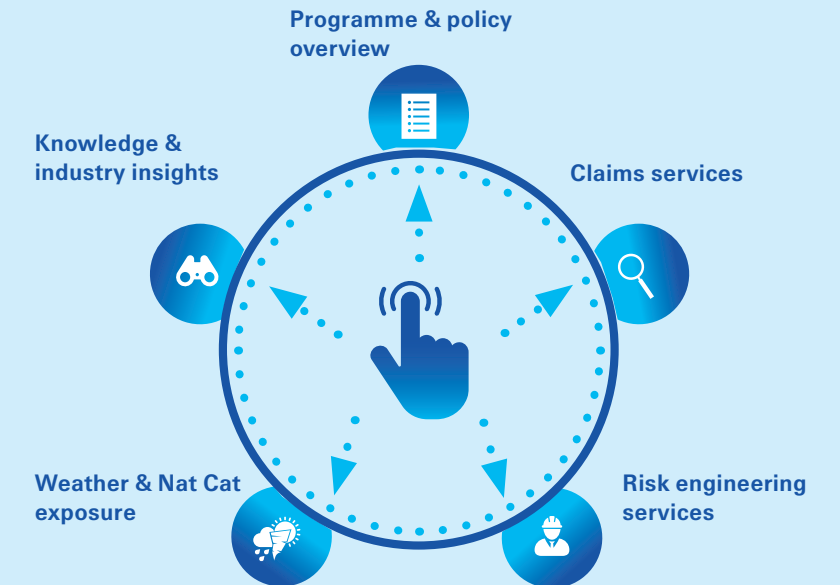


Introducing PULSE: One comprehensive platform, multiple insights at your fingertips

Manage all aspects of your insurance programme quickly and seamlessly from one secure place.

Insightful
Easy access to real-time policy, claim and risk improvement information.

In control
Review your policy, submit loss notifications, track progress of a risk improvement, monitor natural hazard exposure for your risks worldwide and get real-time natural catastrophe event notifications.



Protecting our customers' most valuable assets to drive bold decisions

Our D&O insurance protects your C-level against claims from inside or outside of the company. That way, they can focus on running your business. In case of any claims against the directors and officers, our Executive Risks teams are there to support you. The team is made up of highly experienced underwriting and claims professionals supported by dedicated customer managers. Together they possess a deep product and market expertise to ensure you are protected in the 150+ countries covered by our international network with a broad coverage and quick response time across regions and jurisdictions.

Our offering

- We offer customised international programme coverage solutions with local and master policies. We also offer solutions on both domestic primary and excess basis.
- Our D&O international programmes cover multinationals headquartered in France, Italy, Netherlands, the UK and Germany and their subsidiaries through our network covering 150+ countries.
- Our capacity relies on the Swiss Re Group's very strong financial ratings: S&P (AA-), Moody's (Aa3), A.M. Best (A+)
- Our international programme solutions are also available for property and casualty.

Our teams

Our underwriters have a solid know-how in the design of international programmes. Together with our international programme experts around the globe we ensure that our customers can access our expertise on the ground where they need it.

Swiss Re Corporate Solutions
Mythenquai 50/60
P.O. Box
8022 Zurich
Switzerland

Telephone +41 43 285 2121
Fax +41 43 282 2999

www.corporatesolutions.swissre.com/international-programmes/
www.corporatesolutions.swissre.com/insurance/financial_professional_liability/

Contact us today or learn more

For further information on the Executive Risks teams of Swiss Re Corporate Solutions and the wide array of innovative services and solutions we can provide, please contact one of our experts:

Pietro Ottobrini

Head FinPro EMEA
Milan
Telephone +39 02 6323 6235
Pietro_Ottobrini@swissre.com

Paul Hambling

Lead Underwriter D&O UK, Ireland & South Africa
London
Telephone: +44 20 7933 4719
Paul_Hambling@swissre.com

Arianne Verdoold

Senior Underwriter FinPro Benelux & Nordics
Amsterdam
Telephone: +31 23 711 9346
Arianne_Verdoold@swissre.com

Arturo Luna Ibarra

Lead Underwriter D&O France
Paris
Telephone: +33 1 70 82 95 27
Arturo_LunaIbarra@swissre.com

Gabriele Schreiber-Sahin

Head Casualty & FinPro Germany & Austria
Munich
Telephone: +49 89 38441165
Gabriele_SchreiberSahin@swissre.com

Simone Bassi

Senior Underwriter Executive Risks Italy
Milan
Telephone: +39 02 6323 6298
Simone_Bassi@swissre.com

Swiss Re Corporate Solutions offers innovative, high-quality insurance capacity to mid-sized and large multinational corporations across the globe. Our offerings range from standard risk transfer covers and multi-line programmes, to highly customised solutions tailored to the needs of our customers. Swiss Re Corporate Solutions serves customers from offices worldwide and is backed by the financial strength of the Swiss Re Group. For more information about Swiss Re Corporate Solutions, please visit corporatesolutions.swissre.com or follow us on Twitter @SwissRe_CS.