

AMP Cortex™ Tandem Robot System

Product Datasheet

The AMP Cortex™ tandem robot system automates the sorting and picking of material out of the waste stream. Cortex's precise, high-speed performance significantly increases throughput using two robotic arms. Cortex can be dropped into a line without a costly retrofit or change to operations. With 24/7 coverage and consistent productivity, Cortex dramatically lowers labor costs, while increasing the value of material recovered.



AMP's industry-leading AI platform, unmatched in depth and breadth, helps facilities quickly adapt to tonnage increases and changes to the material stream without sacrificing quality. With Cortex, facilities can capture more in-demand commodities, increase uptime, and reduce variable costs to improve profitability.

Creating solutions to the industry's most pressing issues:

Labor



Reduce time and money spent on high turnover positions.

Safety



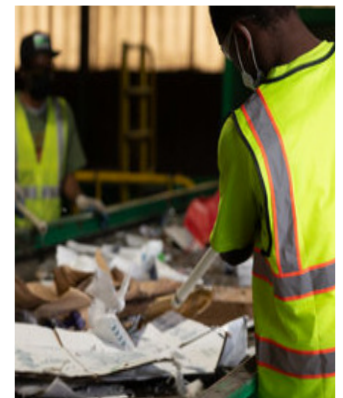
Increase facility safety and reduce training overhead.

Material Recovery



Quickly pivot and capture high value materials.

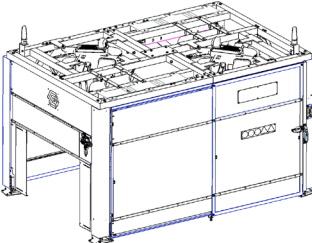
Contamination



Decrease bale contamination.

AMP Cortex™ Tandem Robot System

Technical Specifications

| Dimensions & Weight | | Performance Specifications | |
|--|---|---|--|
|  <p>Installed height: 111" (282cm) from ground to the top of the system</p> <p>Control cabinet dimensions: 40"x21"x78" (101cm x 53cm x 198cm)</p> <p>System weight: 4650lbs (2109kg)</p> <p>Frame composition: Steel tubing/ Top Frame 4"x 4" (10.16cm x 10.16cm)/ Frame Legs 6" x 6" (15.24cm x 15.24cm)</p> | | <p>Pick rate: Up to 160ppm per System (80ppm per robot)</p> <p>Number of discrete sorting placements: Up to 3</p> <p>Maximum object weight: 10lbs (4.5kg) per Robot</p> <p>Burden depth: 1 object</p> | |
| Conveyor Specifications | Environmental | Electrical & Air | Connectivity |
| <p>Maximum conveyor belt speed: 300 feet/minute (91 meters/min)</p> <p>Minimum conveyor visibility: 80% covered, 20% visible</p> <p>Optimum conveyor belt width: Between 43"-60" (109cm-152 cm)</p> <p>Maximum conveyor belt width: 72" (183 cm)</p> | <p>Operating temperature range: 33°F (1°C) to 105°F (40°C) at up to 95% ambient humidity</p> <p>Noise emission: 89.5 dB (max)</p> | <p>Electrical Supply: 208-220V AC / 1 Ph / 50-60 Hz, 30A Service</p> <p>Air Supply: 120 CFM @ 120 psi [3400 l/min @ 8.3 Bar] (ISO 4.4.4)</p> | <p>Internet: Wired Ethernet 10 Mbps+ (IEEE 802.3, CAT5 or better)</p> |
| User Interfaces | | Other AMP Systems | |
| <p>Control cabinet (14.5" x 17.5") touch-screen display</p> <p>(Optional) AMP Clarity™ web based data portal for desktop</p> | | <p>AMP Cortex Single Cell System</p> <p>AMP Vision™ System</p> <p>AMP Dual Gripper</p> | |

Unmatched AI Technology with the Broadest Array of Material Types



Fiber



Plastics



UBC & Metals



Commingled & Residue

LEGAL COMPLIANCE

This product is CE and UL marked in accordance with the following directives:

The control panel is UL508A listed as an enclosed industrial control panel for installation in the United States