



**Recycling Plastic,
Crafting a Sustainable Future**



High-quality Recycled Polyester Staple Fibre (RPSF) | Daily production capacity of 110 MT

ABOUT US

Established in 2021 by visionary founders **Kanav Arora**, **Sizer Lakhani**, and **Rajiv Arora**, we are leaders in PET recycling excellence, transforming discarded PET bottles into premium recycled fibers. With a robust daily capacity of 110 tons, we contribute significantly to reducing plastic waste and promoting sustainability.

Our dedication to environmental stewardship drives us to lead responsibly in resource management, fostering a sustainable future for generations.

Innovation

Constantly evolving by implementing the latest recycling technologies.

Sustainability

Minimizing waste and maximizing resource efficiency at every stage of our operations.

“SHAPING THE FUTURE OF SUSTAINABLE FIBRE”



Transforming



Innovating



Sustaining

OUR VISION

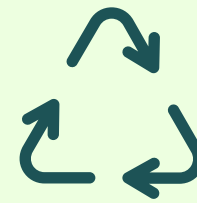
Shaping a Sustainable Future Through Innovation

Driving Environmental Responsibility, Advancing Cutting-Edge Recycling, and Building a Circular Economy for a Greener Tomorrow



Environmental Responsibility

We envision a future where environmental responsibility and resource efficiency define our operations, leading innovation in the recycling industry.



Cutting-Edge Technology

Employing cutting-edge technology to revolutionize the recycling landscape and transform PET waste into premium-quality staple fiber.



Circular Economy

We envision a future where environmental responsibility and resource efficiency define our operations, leading innovation in the recycling industry.

MEET OUR LEADERSHIP



**Mr. Kanav
Shayamsunder
Arora**

(DIRECTOR)

With 17+ years in the textile industry, Kanav Arora leads the company's technical and operational functions.



**Mr. Rajiv
Jatinderkumar
Arora**

(DIRECTOR)

Rajiv Arora brings 15+ years of experience in textiles, managing the Masakali retail brand.



**Mr. Sizer Habib
Lakhani**

(DIRECTOR)

Sizer Lakhani, with 15+ years in sales and procurement, co-founded Nakshatra Group.

OUR PRODUCTS



Off white lustre fibre

Denier Options

1.0, 1.2, 1.4, 1.5, 2.0, 3.0

Cut Lengths

32, 34, 38, 44, 51, 64 mm

Color

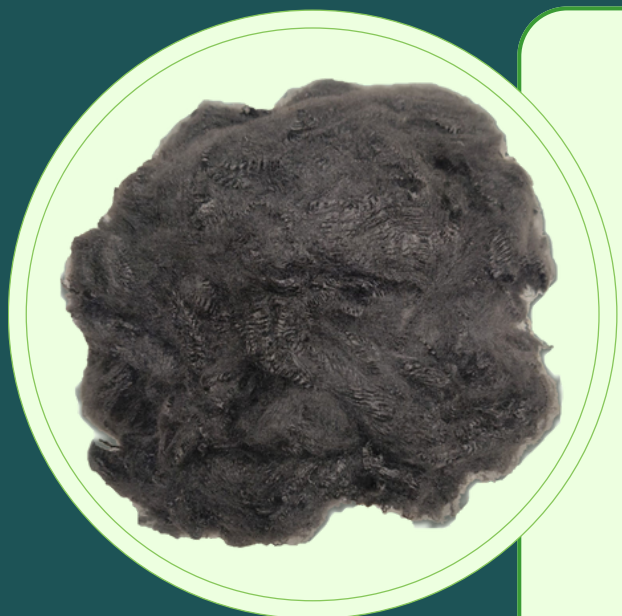
Off White

KEY FEATURES

Versatile and eco-friendly

Ideal for applications in textiles, wadding, and non-woven materials

Durable and high-quality finish.



Jet Black Lustre Fibre

Denier Options

1.0, 1.2, 1.4, 1.5, 2.0, 3.0

Cut Lengths

32, 34, 38, 44, 51, 64 mm

Color

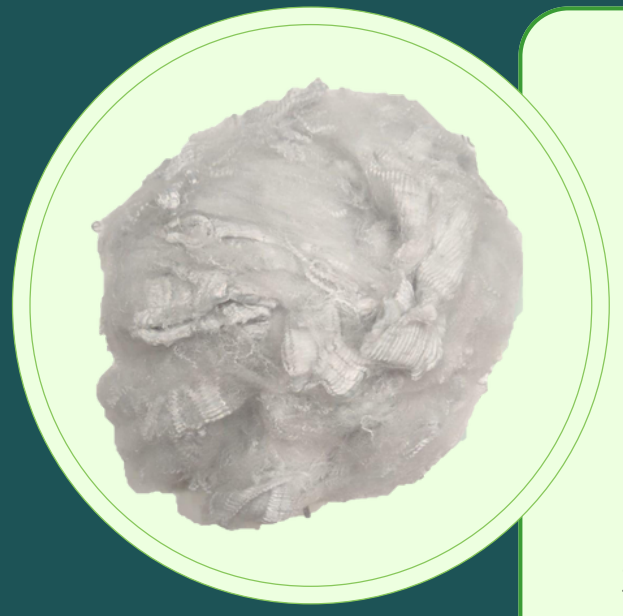
Jet Black

KEY FEATURES

Sleek and rich black finish

Best suited for automotive, geotextile, and upholstery applications

High durability with a polished, professional look.



Vanilla White Lustre Fibre

Denier Options

1.0, 1.2, 1.4, 1.5, 2.0, 3.0

Cut Lengths

32, 34, 38, 44, 51, 64 mm

Color

Vanilla White

KEY FEATURES

Premium appearance with subtle white tones

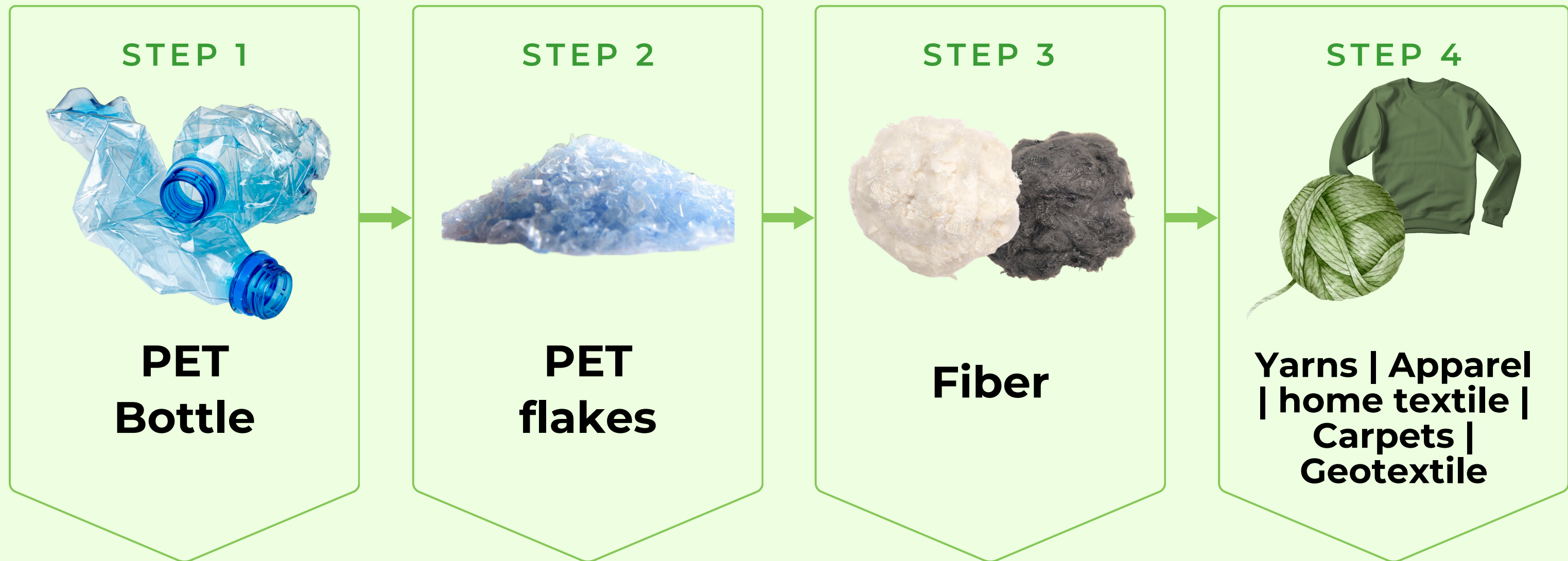
Suitable for filtration, polyfill, and yarn production

Provides excellent tensile strength and durability.



FROM WASTE TO WORTH

Transforming Plastic Bottles into Sustainable Solutions
through Innovative Recycling.



Environmental Sustainability through PET Recycling



Plastic Crisis Solution

Benefit from the wealth of knowledge and experience our consultants bring to the table.



Expertise in PET Recycling

That's why our consultants take the time to assess your specific needs, challenges, and goals.



Eco-Friendly Innovation

Specialize in eco-friendly farming practices that minimize environmental impact while maximizing long-term profitability.

OUR PRODUCTS



PET Flakes Natural

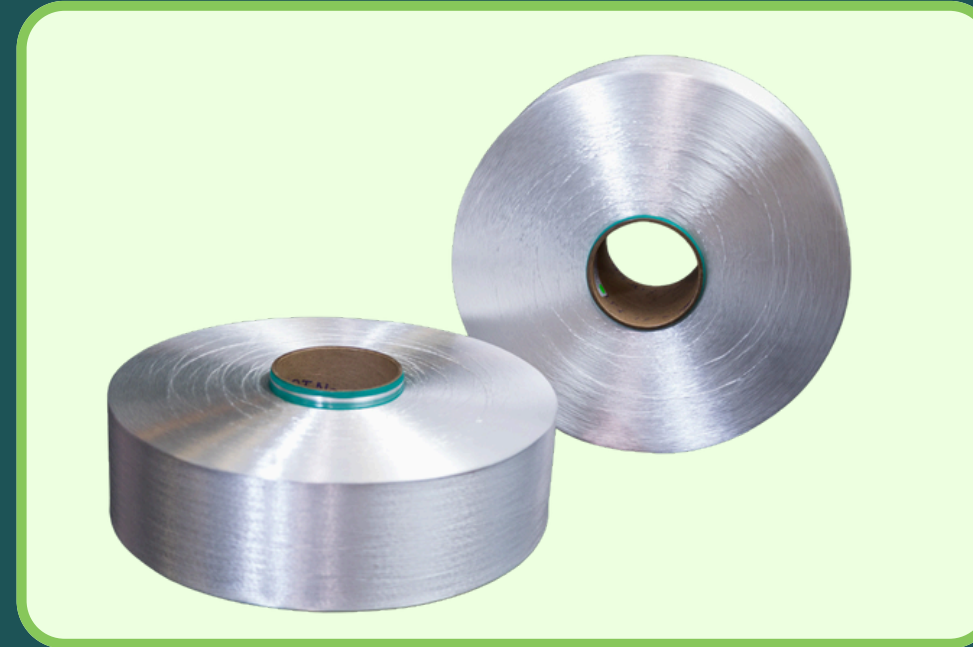


PET Green Flakes

WHAT WE BUY



► **POLYESTER WIRE**



► **POY
(POLYESTER ORIENTED YARN)**



► **PET LUMPS**



► **PET SHEET - GRINDING**



► **PET CHIPS**

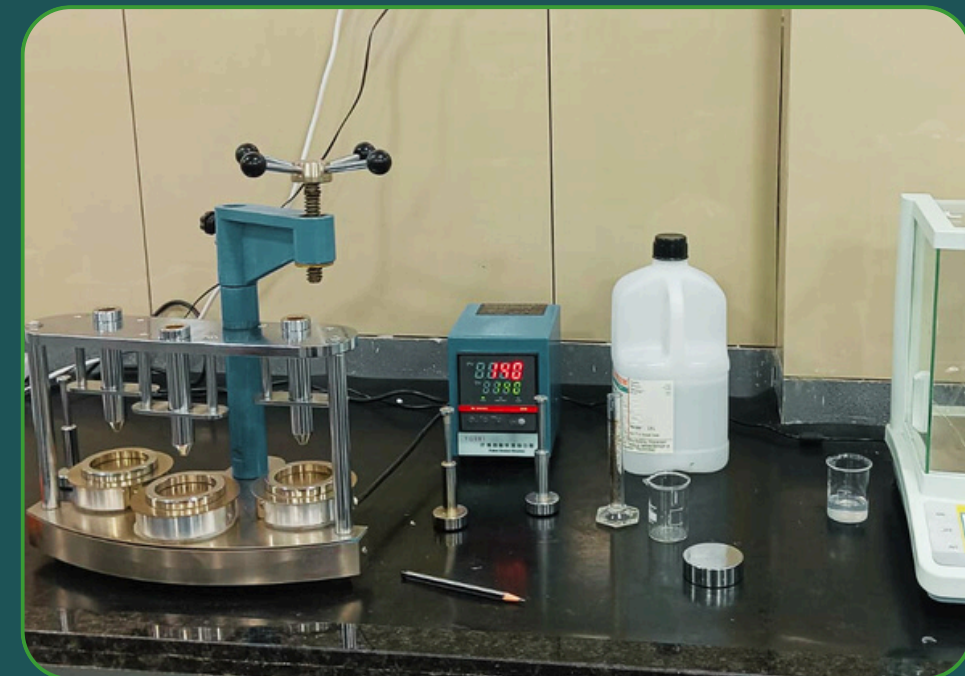
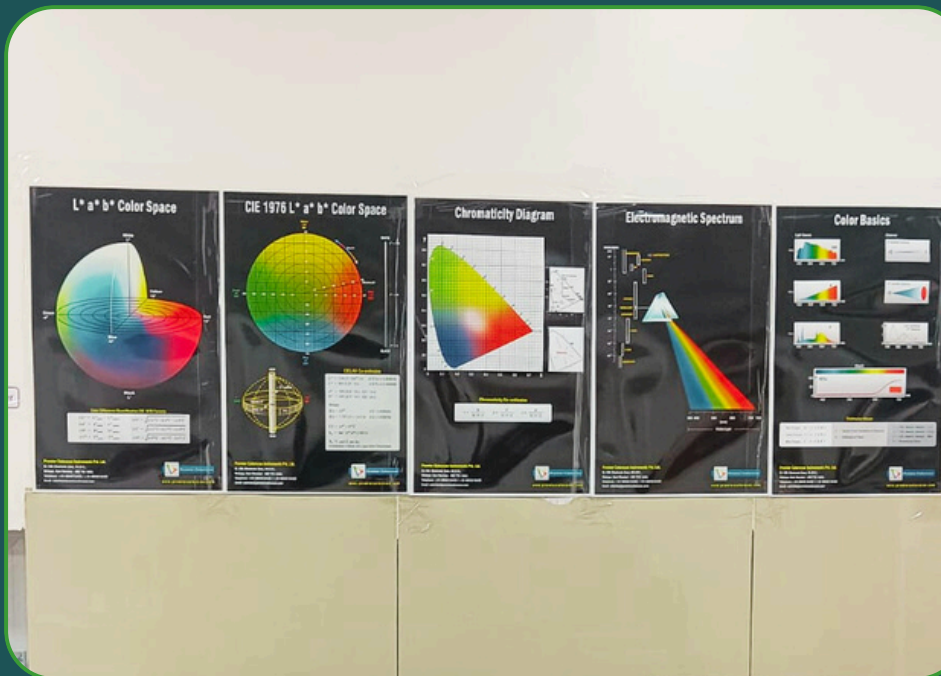
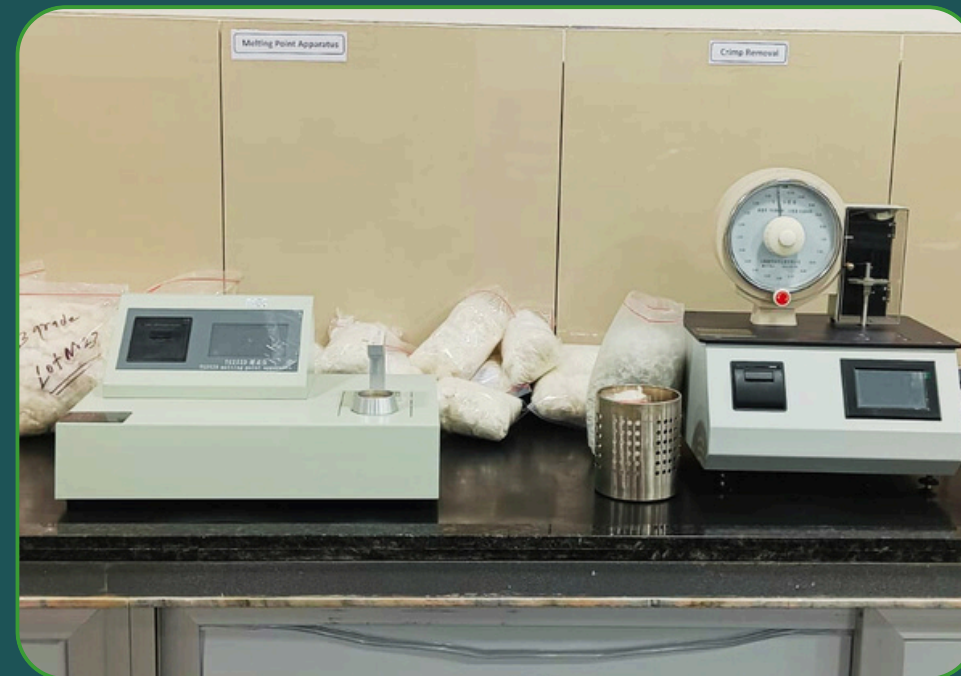
RAW MATERIAL TEST REPORT
(Green Wash Pet Flakes)

Sr.No.	Parameters	Unit	Observation
1	PVC/PC	PPM	42 PPM
2	Wrapper	PPM	35 PPM
3	Non PET contamination (PP/PE/Rubber etc)	PPM	25 PPM
4	Other	PPM	30 PPM
5	Metal Content	PPM	16 PPM
6	Total Contamination	PPM	148 PPM
7	Moisture	%	0.70
8	Bulk Density	g/cc	0.350-0.450

RAW MATERIAL TEST REPORT
(Natural Wash Pet Flakes)

Sr.No.	Parameters	Unit	Observation
1	PVC/PC	PPM	70 PPM
2	Wrapper	PPM	55 PPM
3	Non PET contamination (PP/PE/Rubber etc)	PPM	50 PPM
4	Other	PPM	45 PPM
5	Metal Content	PPM	30 PPM
6	Total Contamination	PPM	250 PPM
7	Moisture	%	0.75
8	Bulk Density	g/cc	0.300-0.350

LAB TESTING EQUIPMENTS



PLANT PHOTOS





Marketing Department

Ravindra Yadav | Mo- 7573984000

Mail- marketing@credenceecofibre.com

Exim Department

Abhishek Shukla | Mo- 7572995000

Mail- exim@credenceecofibre.com

Sales Department

Anuj Singh | Mo- 7573981000

Mail- sales@credenceecofibre.com



No. 68, New Block No. 66, Old Block, Survey,
No. 58, Mangrol, Molvan, Gujarat 394110



www.credenceecofibre.com