



Strong Breeze Series

Strong Breeze Series AI robotic sorter are widely used in construction and decoration waste, recyclable waste, bulky waste and other handle systems. It has the characteristics of fast and wide range of sorting. It can realize the identification and sorting of various materials such as fabrics, plastic drums, wood blocks/boards, shoes, metal, foam, glass bottles, etc. at the same time. The rich sample database can realize the rapid switching of product application scenarios.



● Strong Breeze Series--1516D/1516E

The Strong Breeze Series AI robotic sorter is used for sorting heavy materials such as wood blocks/boards, shoes, cardboard, glass bottles, oil drums, paint buckets, red blocks, and fabrics.

Max sorting weight	30 Kg
Max sorting speed	4000 times/h

Light Breeze Series

The Light Breeze Series AI robotic sorter adopts the image algorithm self-developed by JONO, which is suitable for the disposal system of recyclable waste, kitchen waste, food waste, battery waste, etc. It has high recognition accuracy for overlapped, twisted, stained and damaged materials. It can realize the identification and sorting of wood boards, shoes, plastic bottles, cans, cardboard, Tetra Pak and other materials at the same time. The simple operation interface can realize the quick switching of sorting materials.



● Light Breeze Series--0112D/0112E

The Light Breeze Series AI robotic sorter is used for sorting light materials such as wood boards, plastic bottles, cans, shoes, cardboard, glass bottles, Tetra Pak and other materials.

Max sorting weight	0.5 Kg
Max sorting speed	12000 times/h

Application range and product advantages

Strong Breeze series AI robotic sorter and Light Breeze series AI robotic sorter can be applied to various solid waste disposal systems such as domestic waste, food waste, kitchen waste, recyclable waste, construction and decoration waste, industrial waste, etc., which can realize the impurity removal and purification and the recovery of high-value materials.

High sorting rate

rich sample database, innovative intelligent image recognition technology, combined with the self-developed algorithm model for complex materials such as overlapped, damaged and stains, greatly improves the recognition accuracy rate, making the sorting rate over 96% .

Energy saving

Compared with traditional sorting robots, the energy consumption is reduced by 10% and the operation and maintenance costs are reduced by 10%.

High flexibility

The simple operation interface can quickly switch and select different material database, which can realize the simultaneous sorting of multiple materials.

Efficient and stable

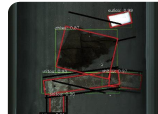
The efficient motion control system ensures the high-speed and stable operation of the equipment.

Space saving

Comparing to traditional sorting robots, our innovative duplex structure robots are saving 20% space and reducing 30% equipment investment costs.

Intelligent

The ability of self-learning in the cloud can realize remote diagnosis and smart upgrade.



Moderate Series

Moderate series BS type multi-channel separator is used for fine separation of various monomer materials. It can realize accurate identification and fine sorting of various mixed materials such as plastic bottles, cans, glass bottles, small household appliances, shoes and plastic products. It could increase productivity, continue to operate and reduce labor cost.



Product advantages

Modularity

Modular design, small footprint, suitable for sorting requirements of various scales and categories of materials.

Digitalization

The various data can be managed on mobile and PC terminals and downloaded just one-click.

Intelligent

The function of one-click switch operation, OTA upgrade, which adapts to various scenarios.

BS type separator product parameters

Dimensions:	18100*1700*2600mm
Sorting speed:	0.5t/h
Power:	4kw
Accuracy:	≥95%

Note: The above data are for reference only, please refer to the actual equipment.



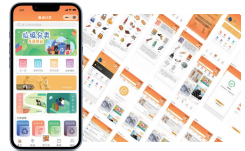
Digitalization platform

Digitalization platform creates a one-network management service platform, with 'multi-sensor fusion intelligent recognition technology, robot, Internet of Things, big data, cloud computing, 5G communication' technology as a means, with 'putting, collecting, transporting, processing' scenarios as the hub, with smart devices as the terminal. Realize real-time data synchronization, business collaboration, data monitoring, tracking and disposal of end-to-end scene business of city management. Through small programs, APPs, and PCs, the data interoperability between the client, operation and maintenance, and monitoring ends is realized, and the smart cloud platform realizes unified management in one network. The management module can be customized, and it can also realize remote diagnosis and intelligent upgrade.



Category applet

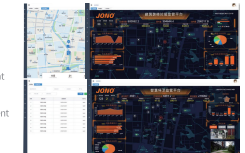
- Category measurement
- Integral mall
- Photo recognition
- Propaganda
- Appointment service for recyclable waste, bulky waste, construction and decoration waste, etc.
- Data board



Smart Sanitation Supervision Platform

Realize the end-to-end closed-loop management mode of the whole process.

- Data management
- Personnel management
- Authority management
- Vehicle management
- Intelligent Analytics
- Equipment management
- Regulatory assessment





SUZHOU JONO ENVIRONMENTAL TECHNOLOGY CO., LTD

CONTACT US

☎ +86 (0)512 8666 8058
 ✉ jono@jono-group.cn
 🌐 www.jono-group.cn

INTERNATIONAL SALES

☎ +86 1507832386 (Sean Song)
 ✉ jono@jono-group.cn

📍 No. 388, Xudong Road, Wuyang Economic and Technological Development Zone, Suzhou, Jiangsu Province, China

YOUR GREEN BUSINESS IMPLEMENTOR

WIND SERIES

WIND Series Artificial Intelligence Products Portfolio

LIGHT BREEZE SERIES

LIGHT BREEZE SERIES

MODERATEGALE BS