



Citrix Networking

for Hybrid Multi-Cloud

Jan 2019



Citrix StoreFront



Jeremy Pearce ▾



Project 2016

[Details](#)

Outlook 2016

[Details](#)

Excel 2016

[Details](#)

Word 2016

[Details](#)

CTXS - Interaction Desktop 2017

[Details](#)

Managed Win10 AMS Desktop

[Details](#)

notepad_sap001

[Details](#)

OneNote 2016

[Details](#)

Skype for Business 2016

[Details](#)

Alchemy

[Details](#)

Concur

[Details](#)

Callidus Cloud

[Details](#)

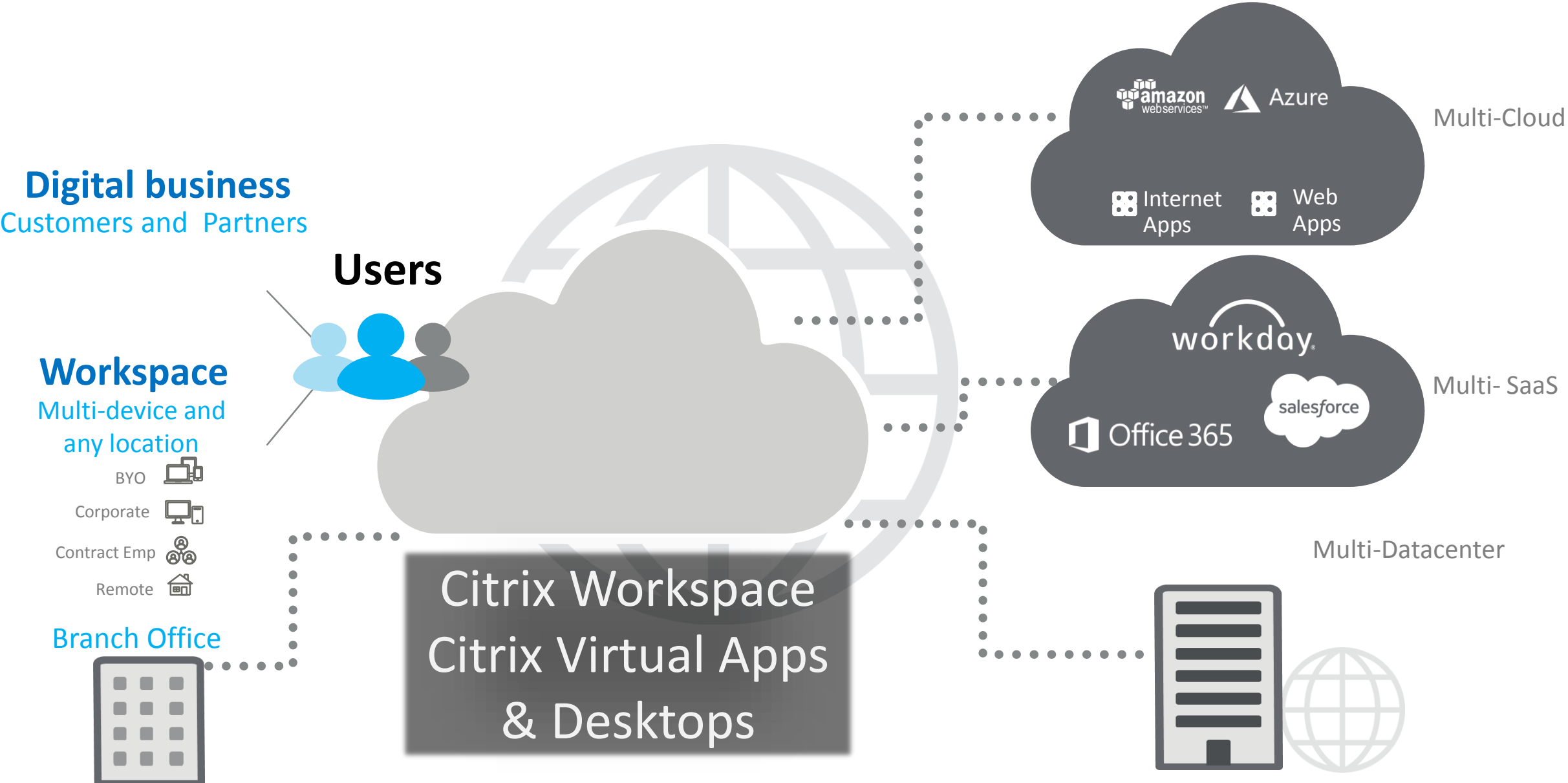
Backstage

[Details](#)

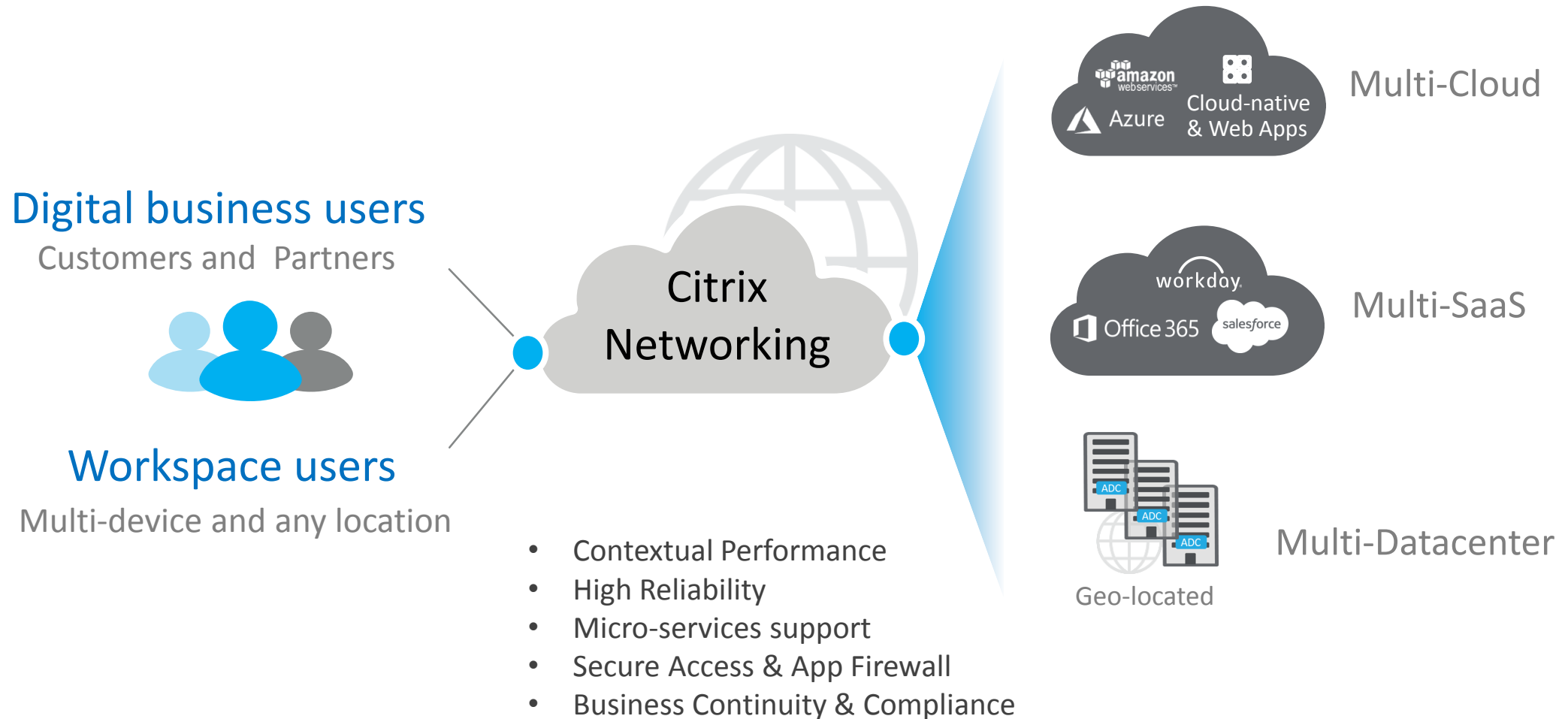
Citrix Blogs

[Details](#)

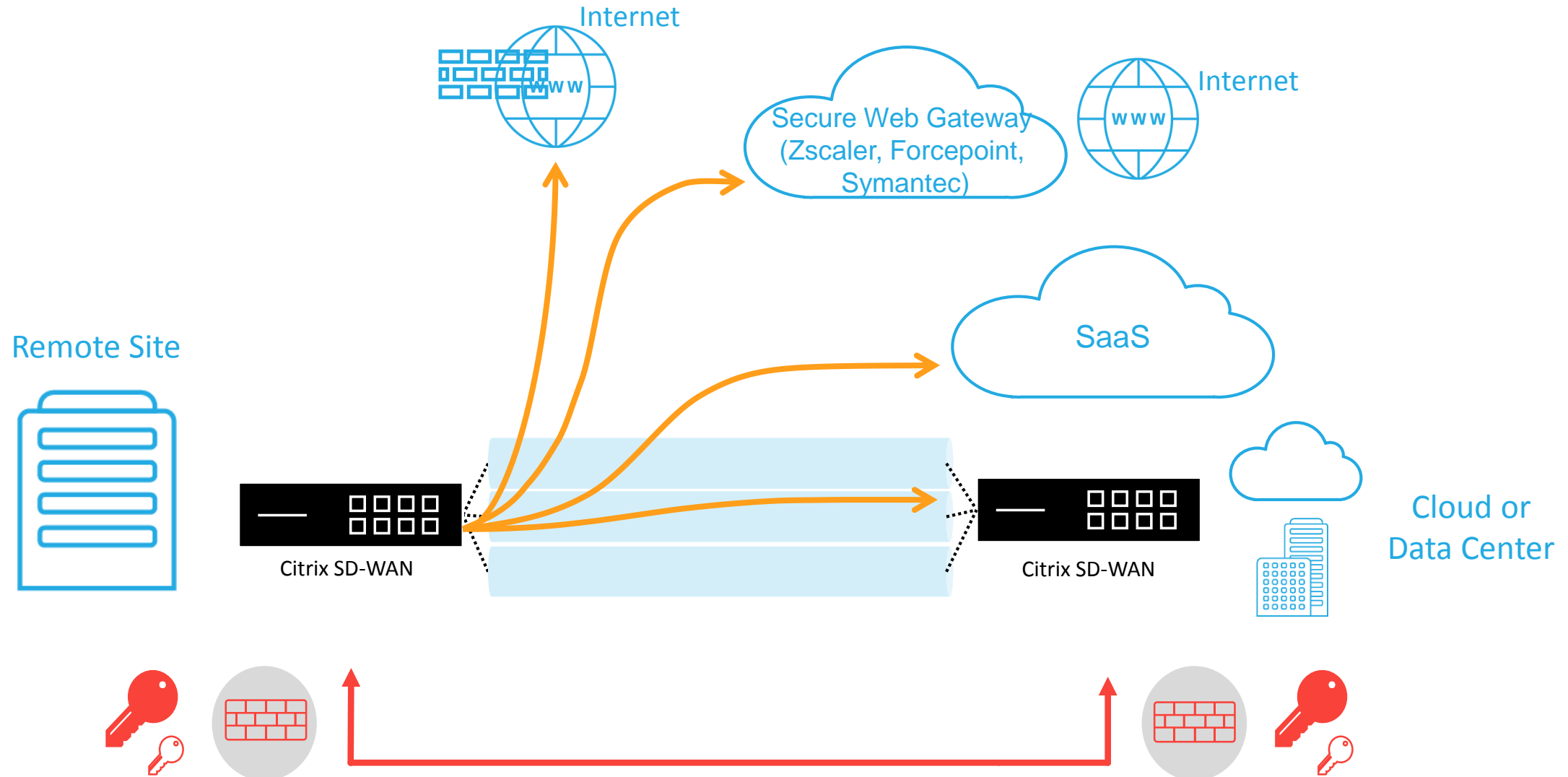
Access to apps and content to work anywhere



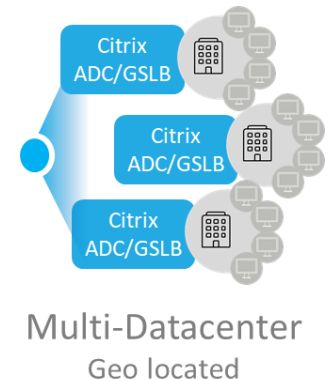
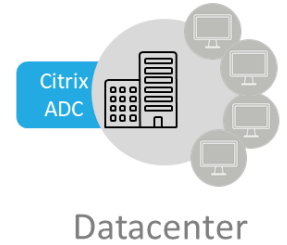
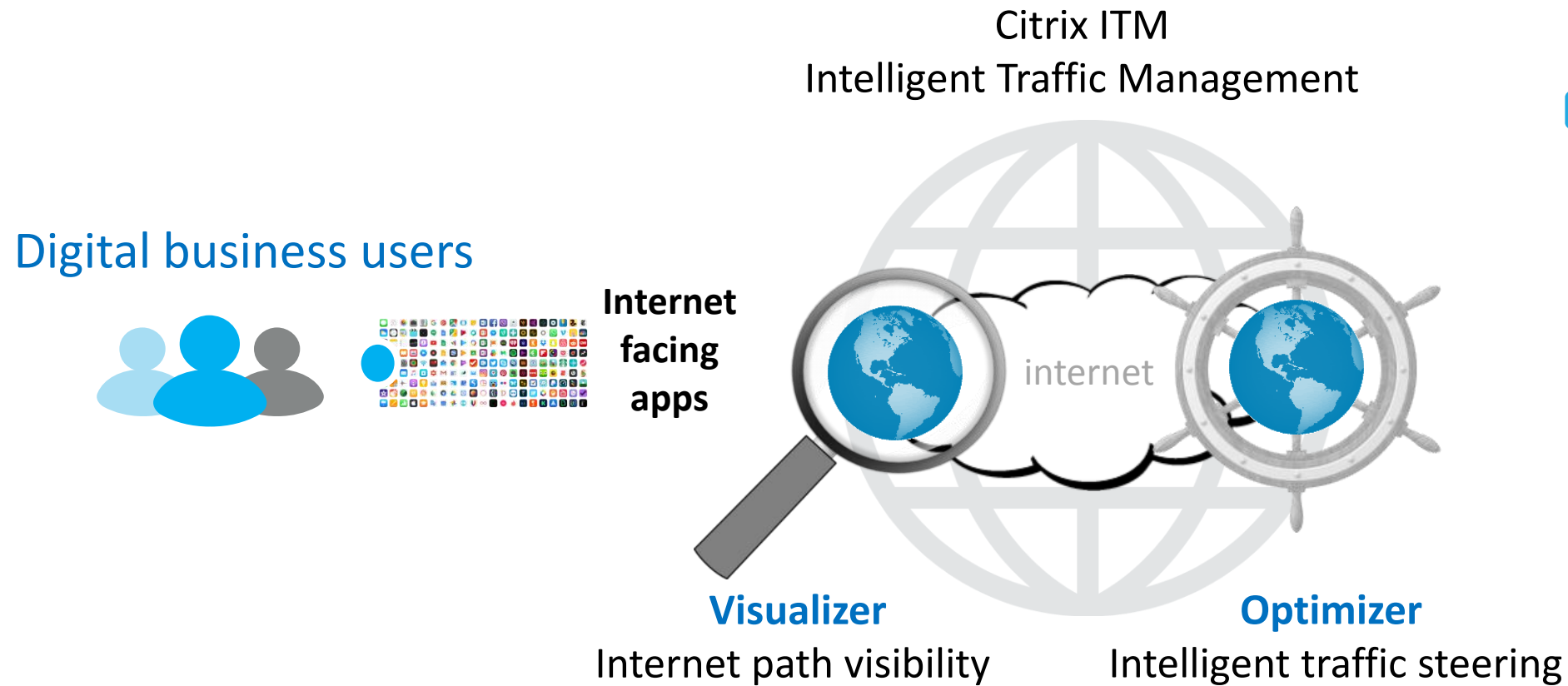
Deliver world-class experience to users anywhere



Security, Performance and Resilience



Experience driven app steering



Eliminate the blind-spot
Give IT the control they need

Citrix Intelligent Traffic Management

Crowd sourced live Internet performance data

Citrix ITM Radar Live

<https://live.cedexis.com>

~900,000,000 user per day

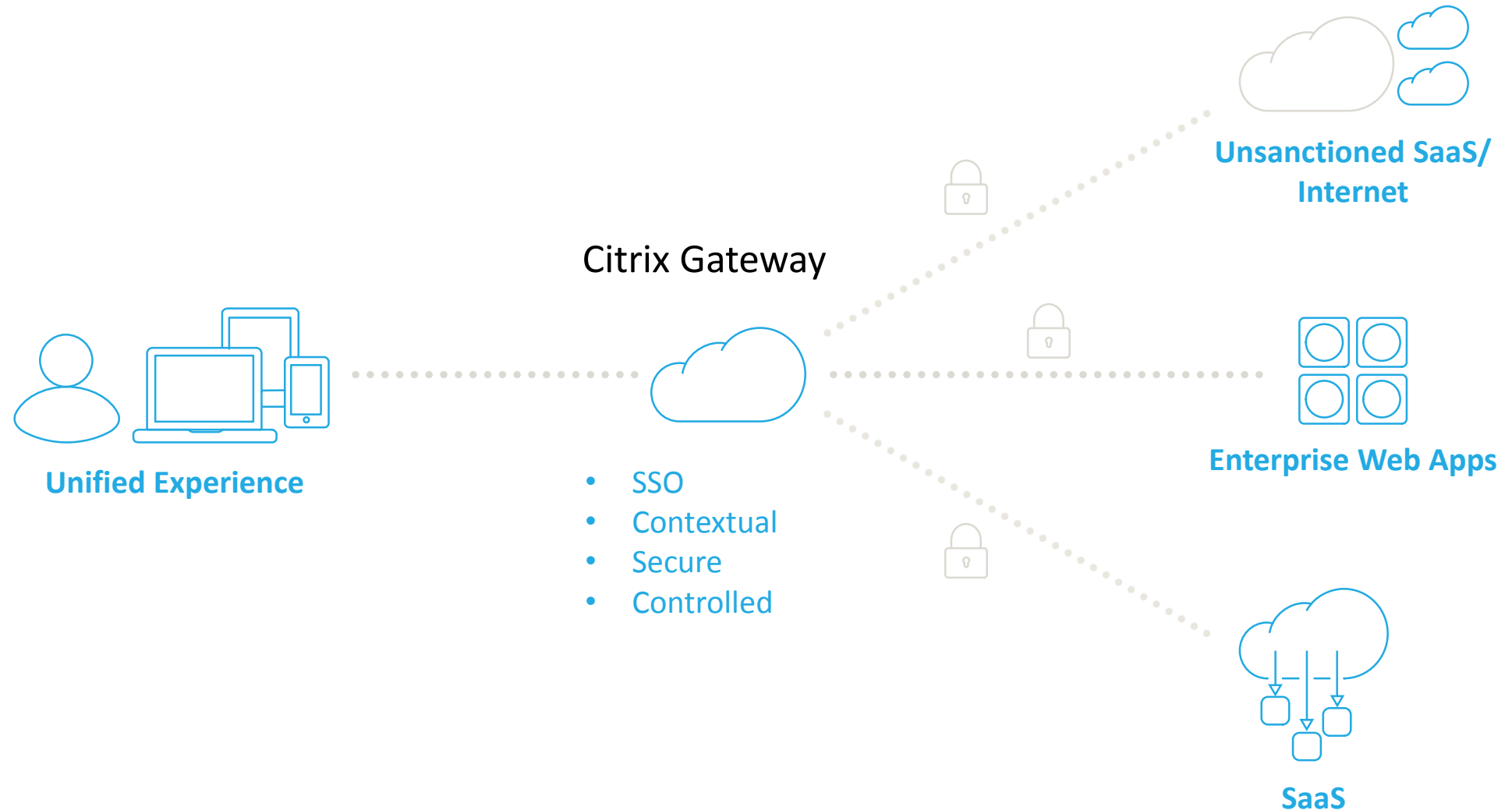
~10,000,000,000 measurement per day

Citrix ITM Performance Visualiser

<https://itm.cloud.com/performance/>

Contextual single access – bring the HMC together

One integrated solution to achieve secure access regardless of where applications are deployed



Differentiated Gateway

10,000+ customers
and counting

- SSO and MFA for SaaS, VDI and corporate web apps
- Support for MS RDP, PCoIP*, Micro-VPN for mobile app sessions
- Secure access for Citrix Virtual Apps and Desktops on-premises or cloud services
- Web Filtering
- Cloud App Control
- Historical insights
- On-prem or Citrix service; available on Azure & AWS

* VMW Horizon

Citrix ADC Leading the Way

25,000+

Customers Worldwide
and Counting

3 Major

Hyperscale Cloud Providers,
Each with 10K+ Units

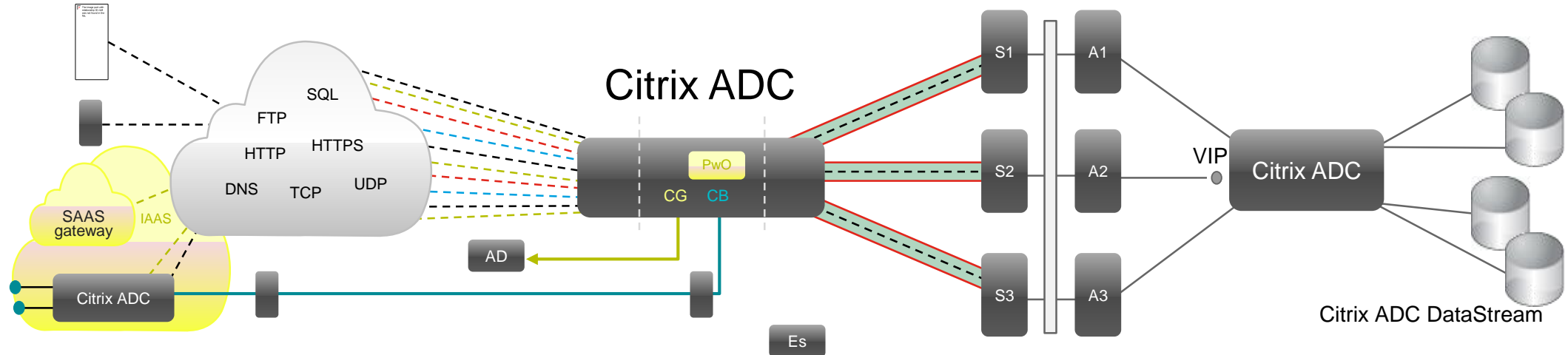
MQ Leader

Gartner MQ Leader for Last
10 Years

“Consider Citrix for all ADC opportunities, worldwide.”

Gartner- Market Guide to Application Delivery Controllers

Citrix ADC - Some Details



Availability

- Load Balancing (SLB)
- N+1 Clustering
- High Availability (HA)
- L4-7 Request Switching
- Advanced Health Checks
- Content Switching
- Cache Redirection
- Global Load Balancing (GSLB)
- Dynamic Routing / PBR
- HTTP Callout
- Citrix ADC DataStream

Security

- SSL Offload
- L4-7 ACL
- Network ACLs
- DoS Protections
- Rewrite + Responder
- Rate Limiting
- SSL VPN
- AAA for App Traffic
- Application Firewall
- Citrix Gateway

Optimization

- SSL Offload
- TCP Offload
- TCP Buffering
- Surge Protection
- Compression
- Caching
- Web Logging
- HTTP 2.0
- Client Keep-Alive
- SACK/Nagles
- TCP Westwood+

Management & Visibility

- HDX Insight
- Web Insight
- Action Analytics
- CLI/GUI
- Nitro REST API
- PowerShell
- MSSCVMM/MSSCOM
- AppFlow
- Syslog
- SNMP
- Command Center
- AppExpert Policies

Platforms

VPX Citrix Hypervisor, Vmware, 100, 200, 1G, 3G HyperV

MPX 5550-5650, 8005-8015, 9700-15500 FIPS, 11515-11542, 14020-14100, 22040-24150, 25100-25160T

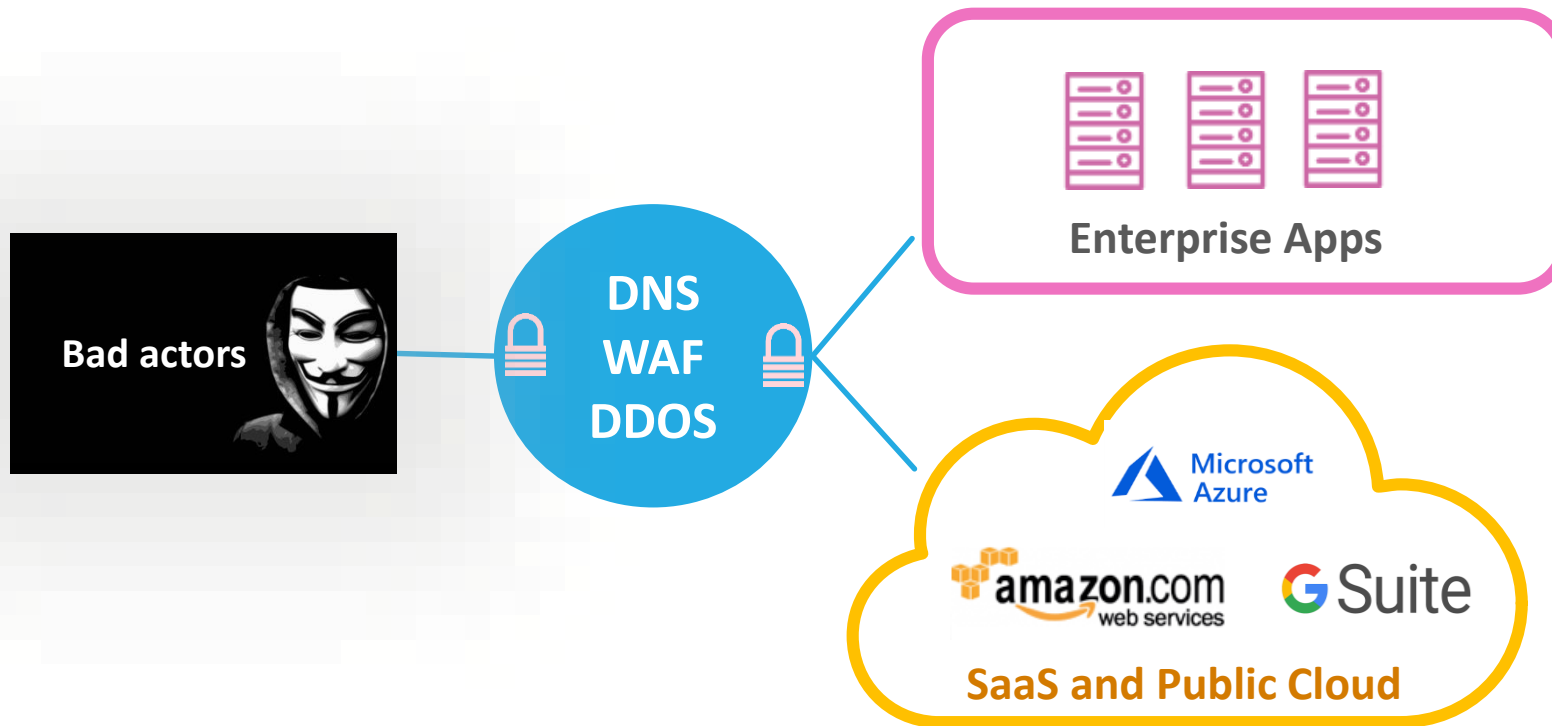
SDX 8015, 11515-11542, 14020-14100, 22040-24150

Editions

Standard, Enterprise, Platinum, Express, Developer

Pay-As-You-Grow

Protect apps against attacks



Control and secure the first hop to the resource
for accessing on-premises and cloud apps

Avert risk and stop attacks

Common OWASP Top 10 (SQLi, XSS etc)

Signature Protection

IP reputation

Geo Blocking

Security Insight Dashboard

SSL inspection

Layer 3/4 DDoS

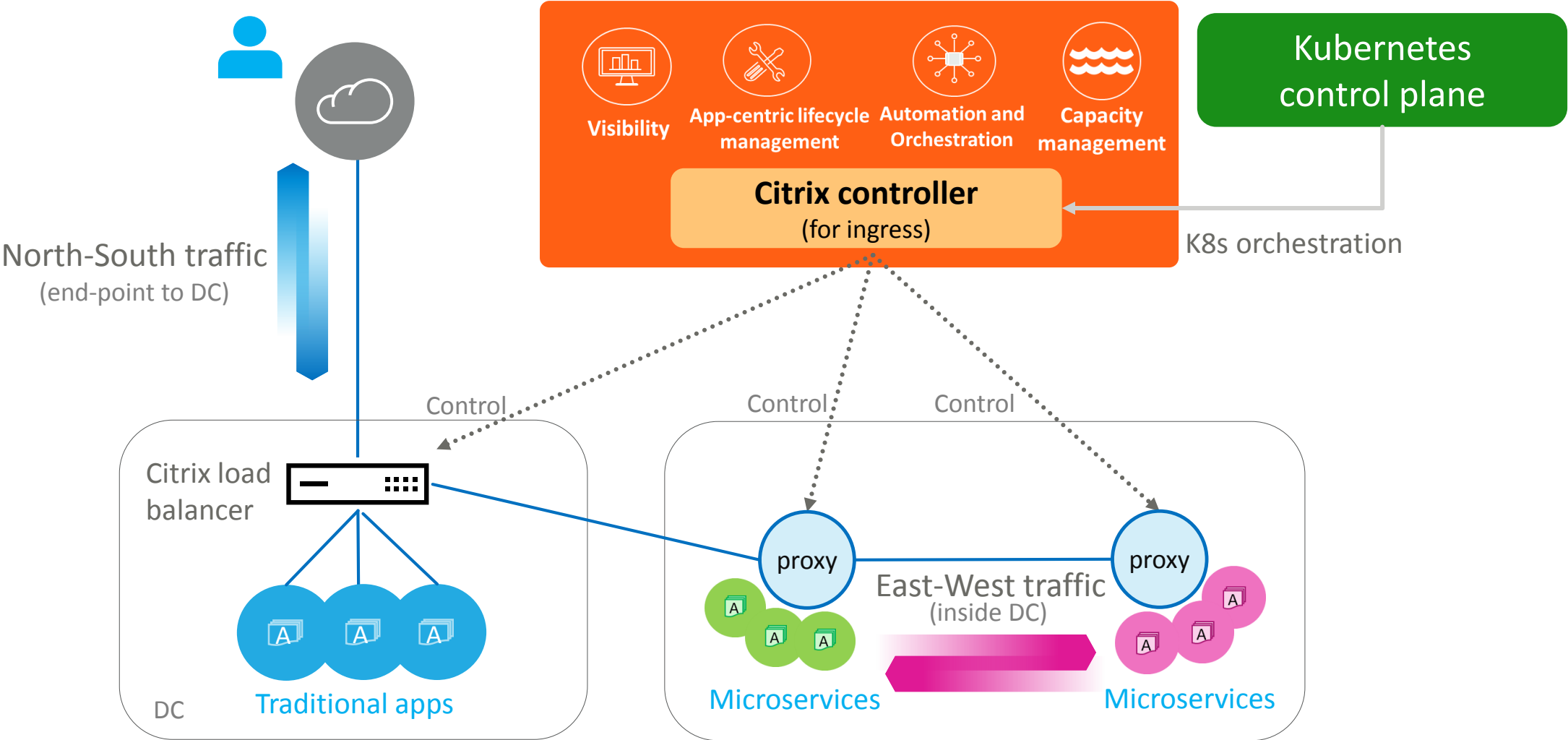
Custom Rules (roadmap)

Performance or Data Transfer Expansion

Multi-Geo hosting

Performance and experience of modern apps

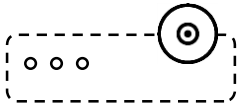
control and visibility for both, N/S and E/W traffic



Citrix ADC Portfolio: Built for Hybrid Multi Cloud

Most Comprehensive, Feature Rich & Software-Centric

For Your Every Step for Transition to Hybrid Multi Cloud



Virtual Appliances
DC & Private Cloud, VPX



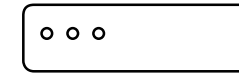
In Public Cloud
VPX for AWS, Azure, GCP



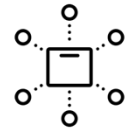
Containers
Public & Private Cloud, CPX



Bare Metal
Private & Public Cloud, BLX



Hardware Appliances
DC & Private Cloud, MPX



Multi-Tenant
MSP & Private Cloud, SDX

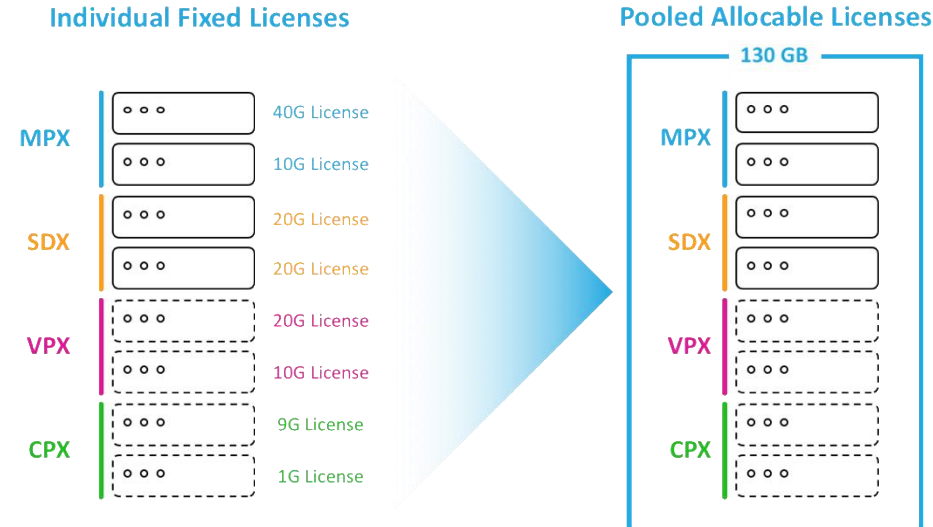
Single Software Code Base

across Portfolio for

Features, APIs & Operational Consistency, and Innovation Velocity

Pooled Capacity Licensing: Built for Hybrid Multi Cloud

More Agility and More Value



Flexibility

Move the capacity among ADCs in hybrid multi cloud

Better Economics

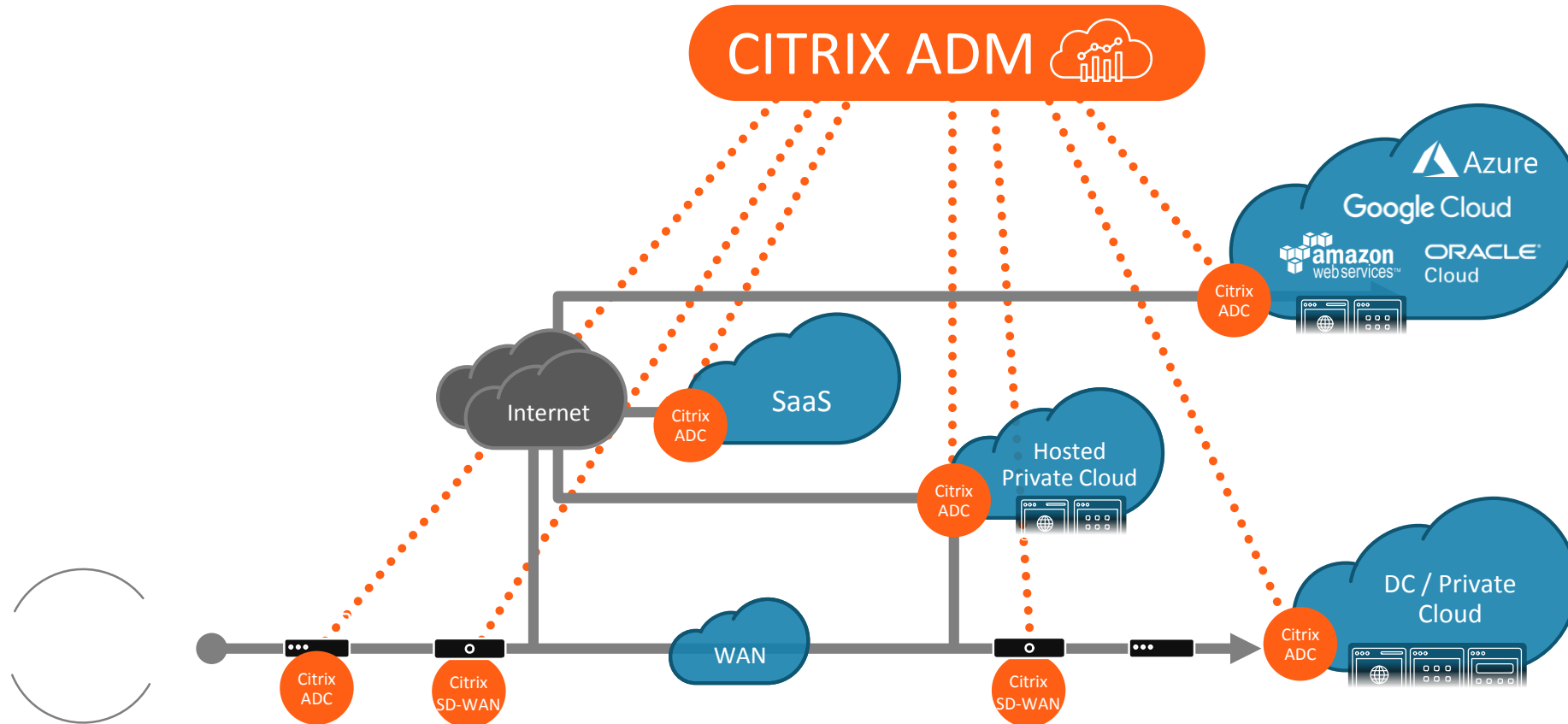
Better utilization, granularity, use cases

Simpler

Enterprise-wide visibility & automation

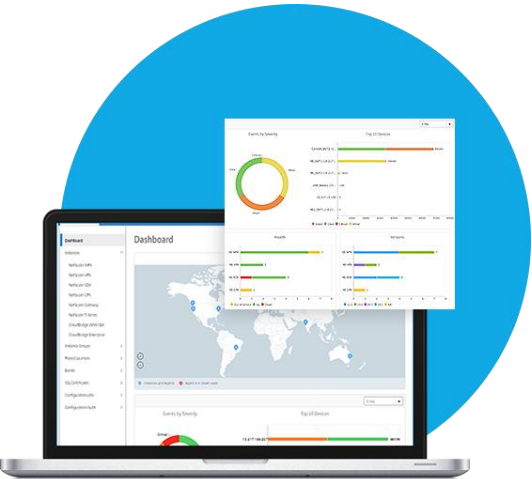
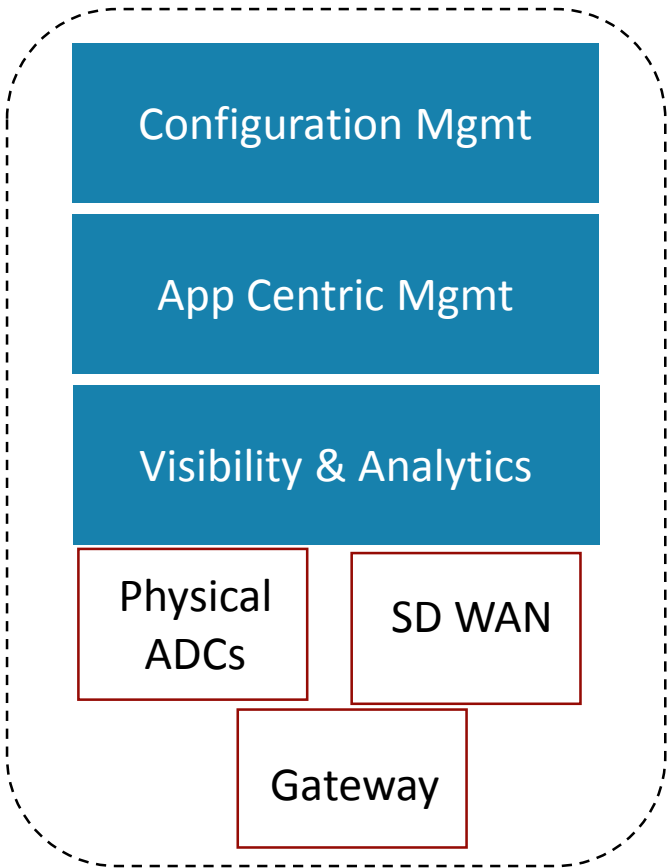
Transition to Hybrid Multi Cloud at your Business Speed

Orchestration, Management and Control



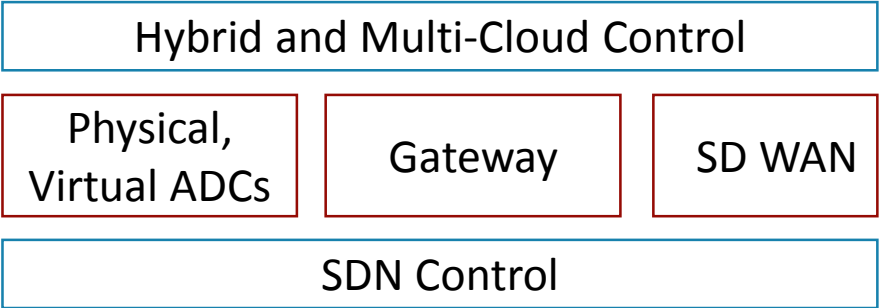
Citrix ADM for HMC

Classic DC Management

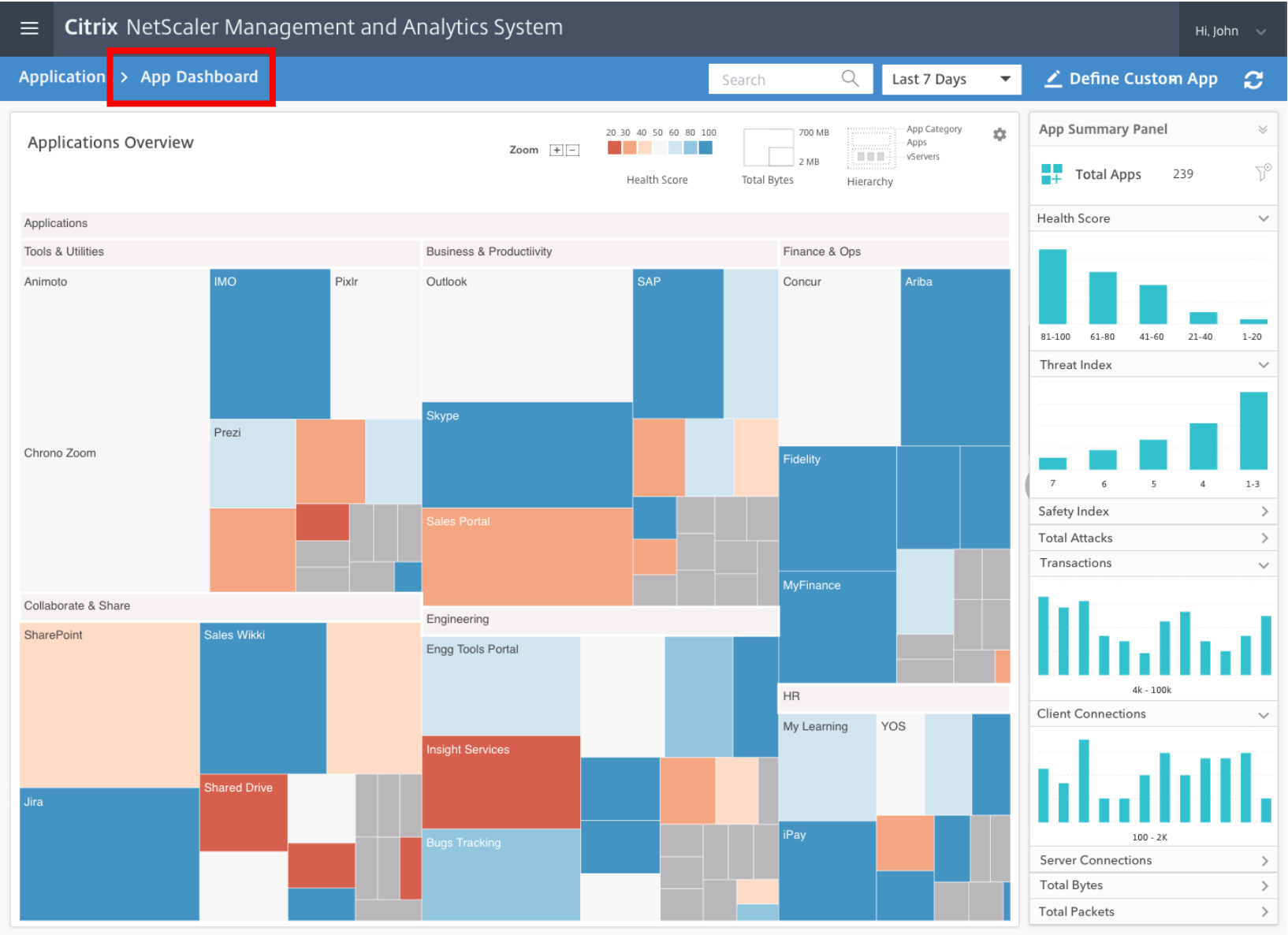


Citrix Application Delivery Management

New Generation, Borderless DC Management



Citrix ADM App activity Analytics



When user clicks on any app

Which network functions define this app?

Health Score Trend

Threat Index Trend

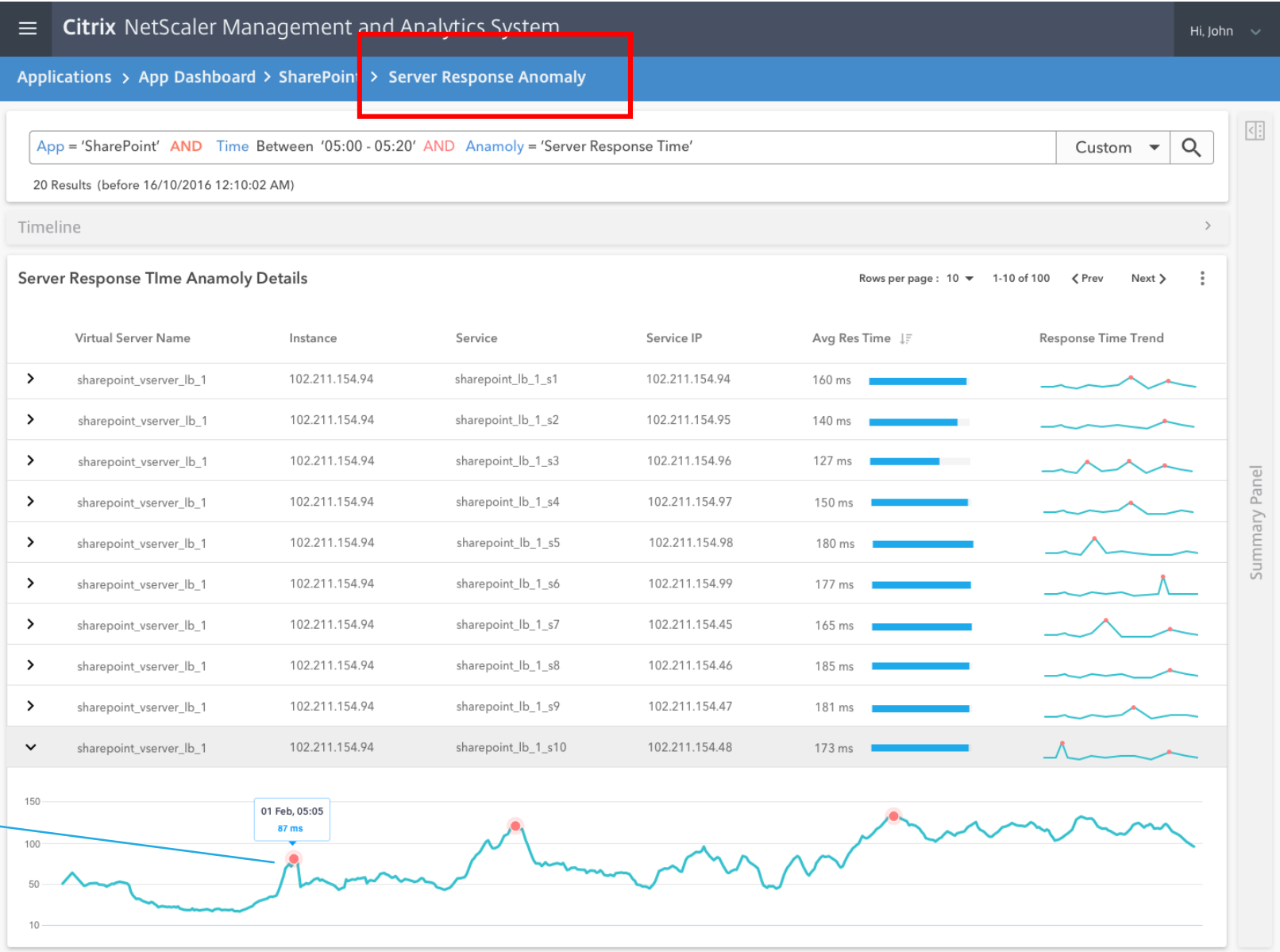
Attack Trend

Detect anomalies for performance troubleshooting

Which services are contributing to server response time anomalies?

What has been the anomaly trend line for this service?

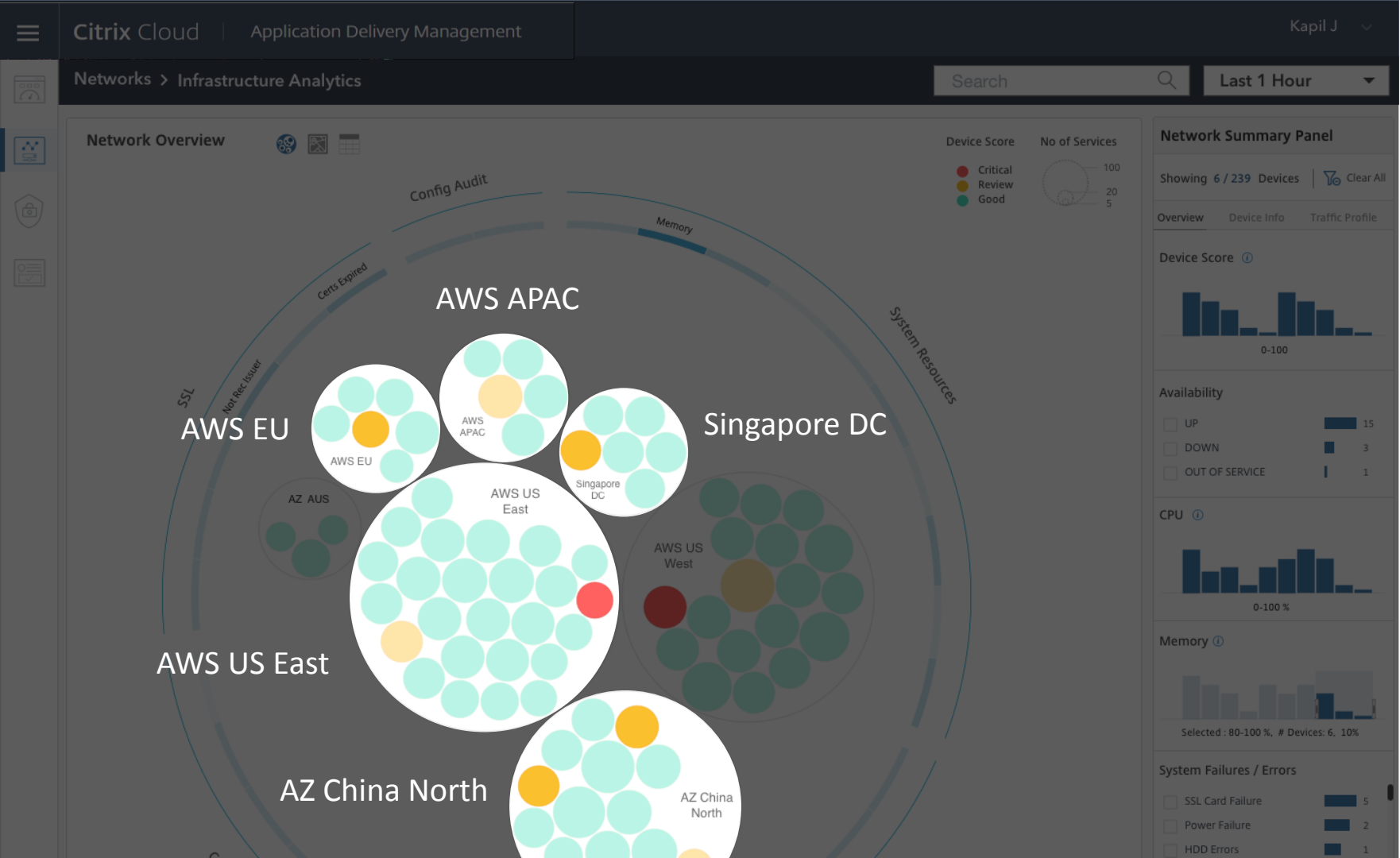
Which point was the anomaly identified?



Citrix ADM Infrastructure Analytics

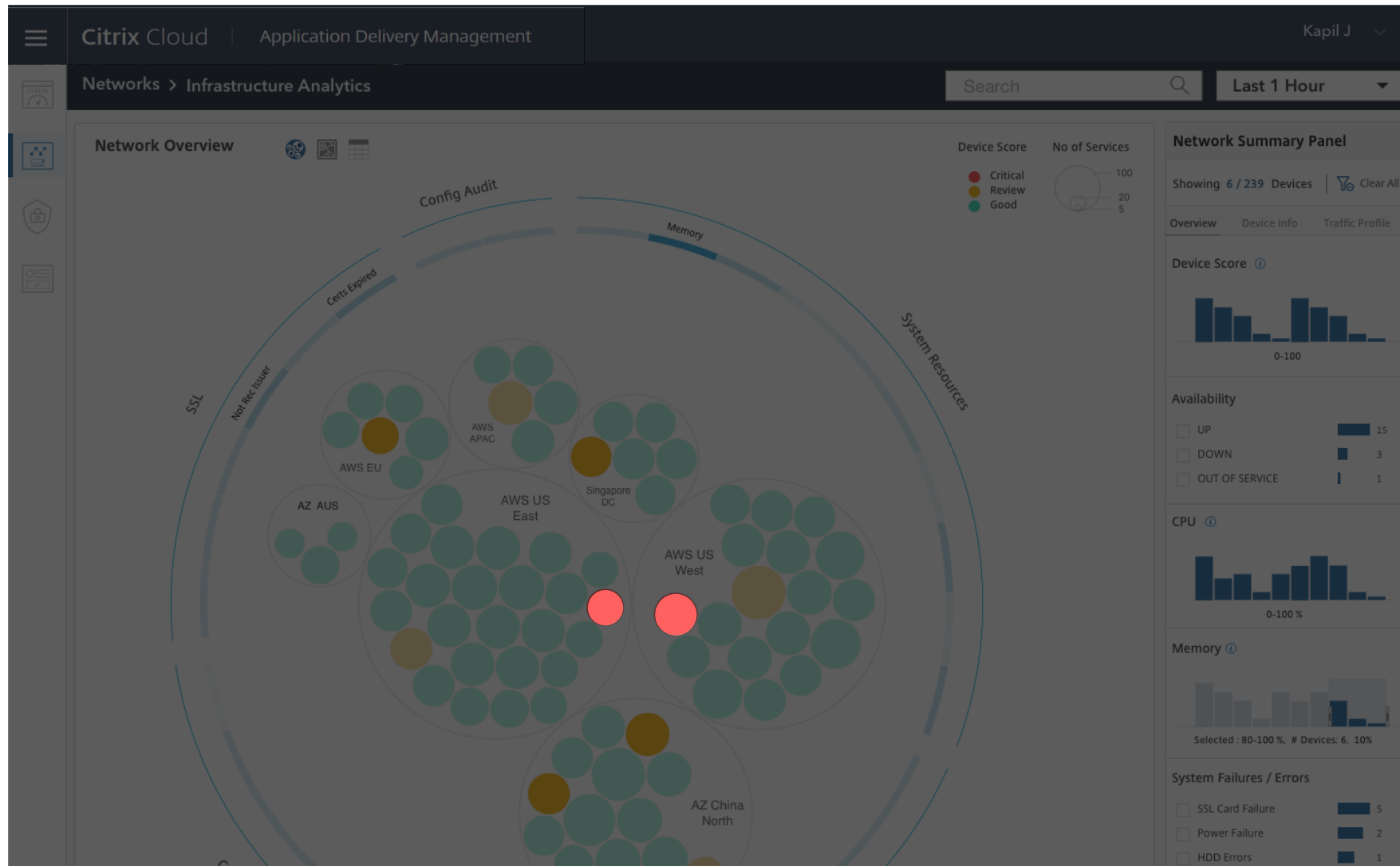
Infra Analytics across on-prem, Azure and AWS deployment.

Deployment
Infrastructure



Citrix ADM Infrastructure Analytics

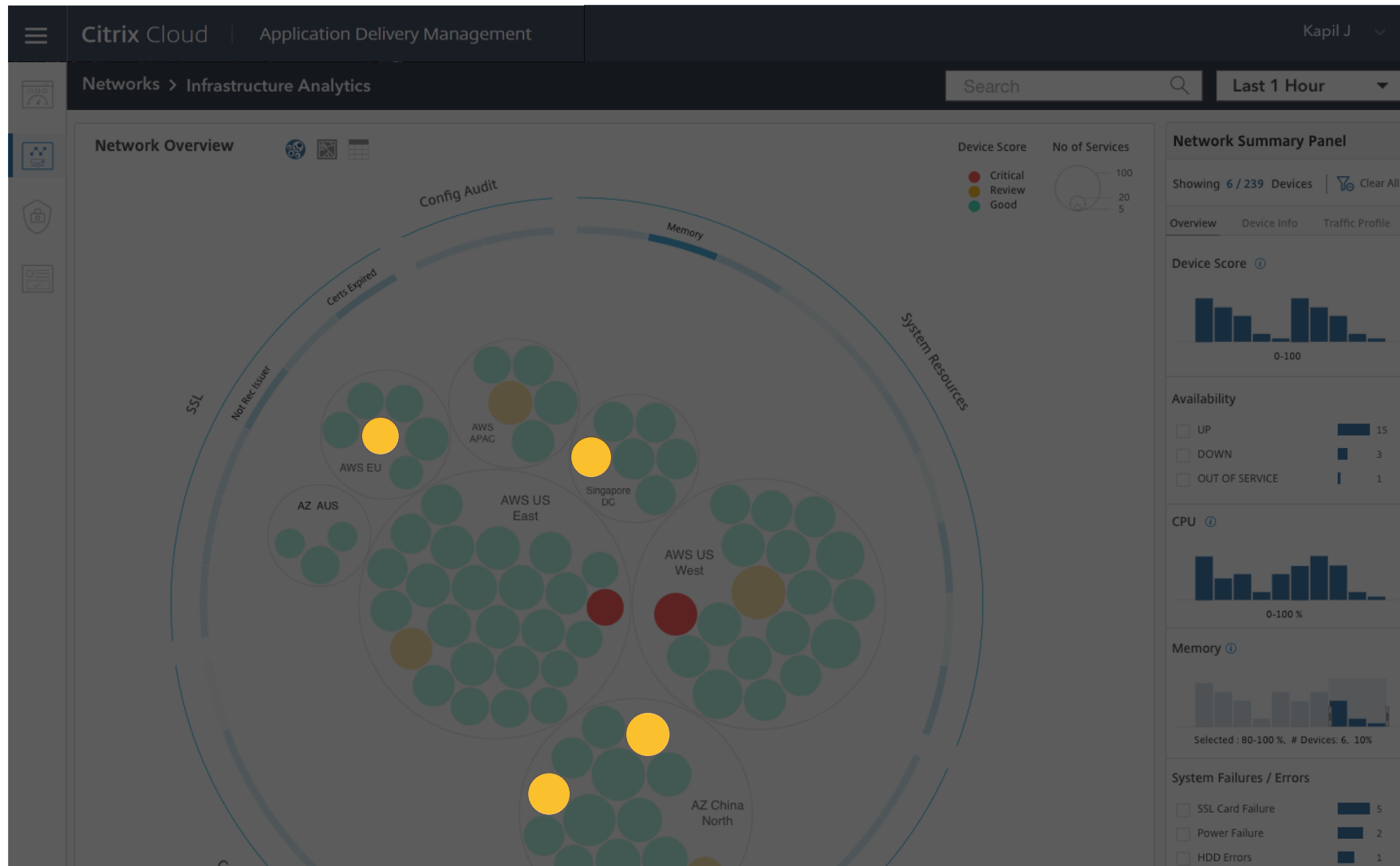
Infra Analytics across on-prem, Azure and AWS deployment.



2 instances with Critical Memory issues

Citrix ADM Infrastructure Analytics

Infra Analytics across on-prem, Azure and AWS deployment.



4 instances with
SSL certs expired

Citrix ADM Security Analytics

This is a demo environment.

Start the Tour

Security

Performance

Operations

Settings

Help

Search

Alerts

274

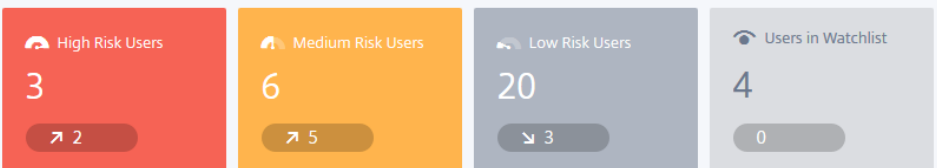
Users

User Access

App Access

Last 1 Hour

User's Risk Profiles [29 Risky Users](#) | [29 Discovered Users](#)



Risky Users

Highest Score

Highest Score Change

SCORE	CHANGE	TREND	USER
99	+26		Georgina Kalou
98	+8		Joss Carpenter
96	+13		Andrew Jackson
78	-9		Caroline Long
77	+27		Kevin Smith

[See More](#)

Users in Watchlist

SCORE	CHANGE	TREND	USER
99	+26		Georgina Kalou
76	+24		Cathreen Blue
2			Jeanelle Wohlers
1			Mabelle Brinkley

[See More](#)

Citrix ADM Security Analytics

This is a demo environment.

Start the Tour

Security

Performance

Operations

Settings

Help

Search

Alerts

274



Risky Users

Search...



Last 1 Hour



Filters

Clear All

Risk Scores



Score Change



Users

- ☐ High Risk Score
- ☐ Medium Risk Score
- ☐ Low Risk Score
- ☐ Users in Watchlist

Risk Indicator Type

- ☐ Access
- ☐ Data
- ☐ Application

Showing 29 users

SCORE	CHANGE	ACCESS	DATA	APPLICATION	TREND	USER	LATEST RISK INDICATOR
99	+26	39	37	7		Georgina Kalou	Potential Data Exfiltration 2018-05-08 09:45:00
98	+8	98	0	0		Joss Carpenter	Attempt to Access Blacklisted URL 2018-05-08 09:45:00
96	+13	41	40	0		Andrew Jackson	Unmanaged device detected 2018-05-08 09:45:00
78	-9	14	58	6		Caroline Long	Excessive file sharing 2018-05-08 09:00:00
77	+27	15	30	0		Kevin Smith	Security risk detected by Microsoft Windows ATP 2018-05-08 09:00:00
76	+75	10	49	0		Kameron Soft	Logon failures 2018-05-08 09:45:00
76	+24	30	34	0		Cathreen Blue	Unmanaged device detected 2018-05-08 09:45:00
74	+54	59	0	0		Maria Diaz	Device with blacklisted apps detected 2018-05-08 09:45:00

Citrix ADM Security Analytics

This is a demo environment.

Start the Tour

Security

Performance

Operations

Settings

Help

Search

Alerts 274



Georgina Kalou

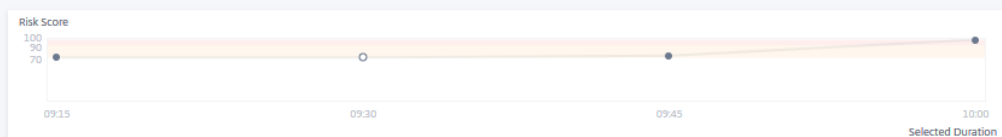
Last updated April 3, 2019, 10:57 BST (UTC+0100)

User Info

Actions

Last 1 Hour

Risk Timeline



5/8/2018

09:50:00 AM



Add to watchlist

Action applied >

09:47:00 AM



Notify user

Action applied >

09:45:00 AM

HIGH

100%

Potential Data Exfiltration



09:44:00 AM

MEDIUM

100%

Unusual logon access



09:30:00 AM

MEDIUM

100%

Unusual Application Usage (Virtual)



09:15:00 AM

MEDIUM

100%

Authorization failures



Citrix Networking provides orchestration, management and control

across hybrid multi-cloud environments

Digital business
Customers and Partners

Workspace
Multi-device and
any location

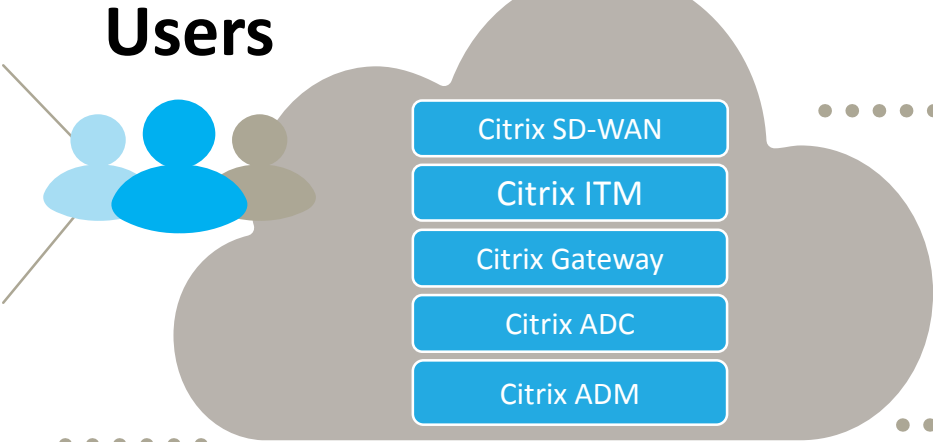
BYO 

Corporate 

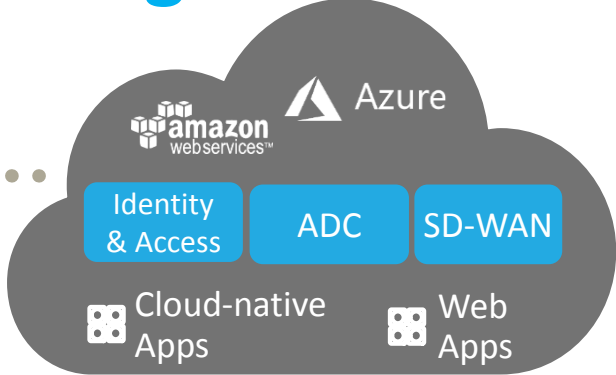
Contract Emp 

Remote 

Branch Office



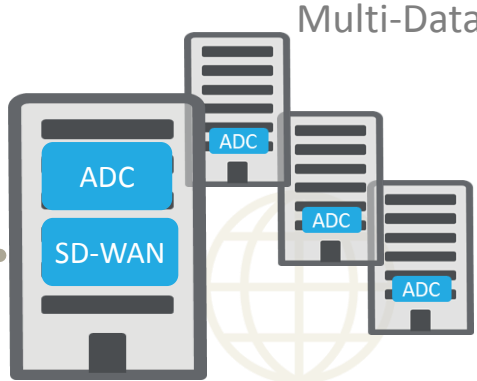
CITRIX
Networking



Multi-Cloud



Multi- SaaS



Multi-Datacenter

Geo-located

