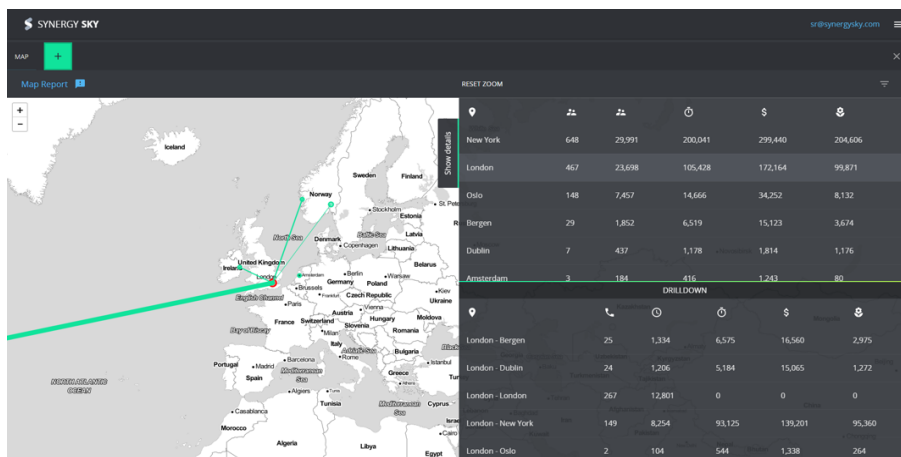
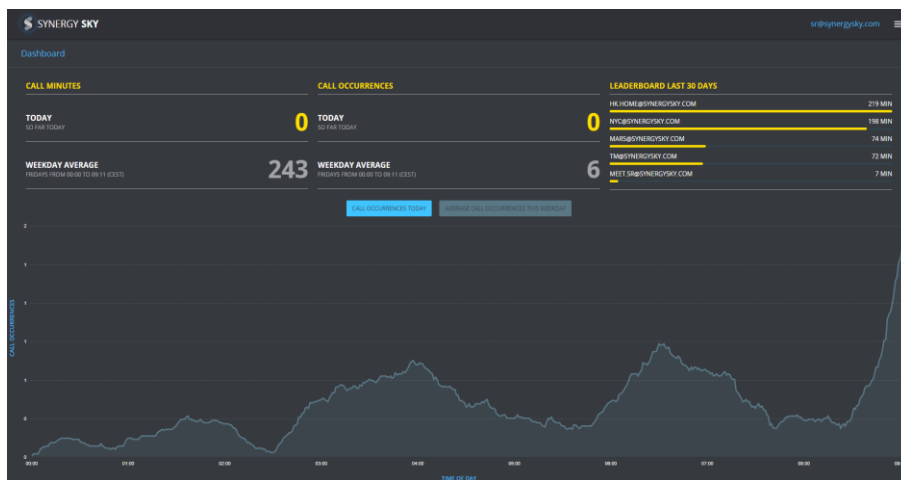


Insights to make better decisions

Synergy ANALYZE helps organizations understand collaboration trends and patterns, and provides the analysis needed to make fact-based decisions on collaboration investments, divestments, training, and service changes.



KEY INSIGHTS

- ✓ ROI
- ✓ Packet loss / Jitter
- ✓ Travel cost savings
- ✓ Usage history and trends
- ✓ Productivity Increase

HIGHLIGHTS

- ✓ Multi-dimensional collaboration analytics
- ✓ Heat Maps
- ✓ All data stays on customer premises
- ✓ Easy deployment

SUPPORTED TECHNOLOGIES

- ✓ Cisco CMS,
- ✓ Pexip Infinity

FEATURES

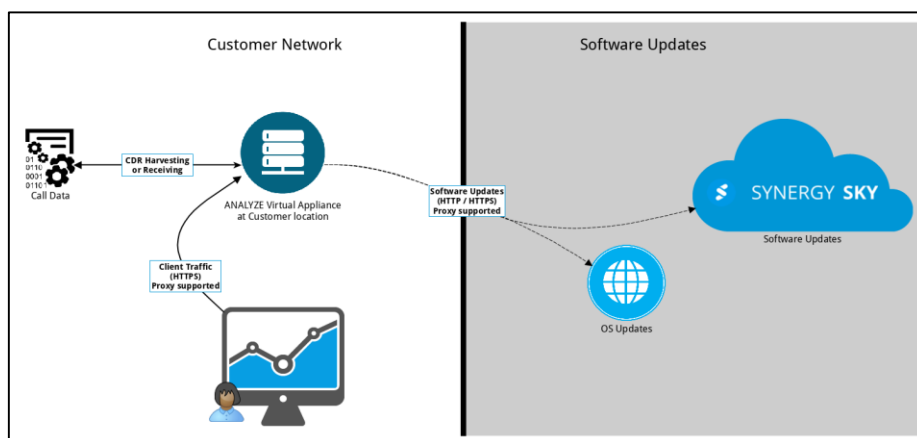
- ✓ Live dashboard
- ✓ Intelligent matching of data from different devices to avoid duplicate reporting of the same calls
- ✓ Fully customizable URI tagging system with Department, Location, Country and Custom Tags
- ✓ User and Admin roles
- ✓ Unique on-premises solution, keeping your data on your premises
- ✓ Quick installation
- ✓ Local and Time zone, configuration support for formatting and calculation
- ✓ Single click upgrade and maintain function
- ✓ Batch management of URIs for swiftly tagging of multiple URIs

SPECIFICATIONS

FROM	TO	PROTOCOL (PORT)	DESCRIPTION
ANALYZE	92.220.31.18/28	SSH (2222)	Remote support disabled as default.
ANALYZE			
ANALYZE	*	DNS	
ANALYZE	*	NTP	Default target is: 0.freebsd.pool.ntp.org, 1.freebsd.pool.ntp.org 2.freebsd.pool.ntp.org
ANALYZE	pkg.FreeBSD.org	HTTP/HTTPS	Software update repository, web proxy is supported
ANALYZE	92.220.31.18/28	HTTP/HTTPS	Software update repository, web proxy is supported
ANALYZE	Cisco Video Communication Server API	HTTP/HTTPS	CDR harvest of Cisco VCS
ANALYZE	Cisco Meeting Server API	HTTPS	System configuration of CDR Receiver using Management API
Cisco Meeting Server Node	Appliance	HTTP/HTTPS	CDR pushed from Cisco CMS to the AS
ANALYZE	Pexip Infinity API	HTTP/HTTPS	System configuration of CDR Receiver using Management API
All Pexip Infinity Nodes	Appliance	SYSLOG (TCP)	CDR syslog pushed from Pexip Infinity to the AS
Web client	AS	HTTP	User interface access is through the cloud over HTTP, proxy is supported.

Device Version Support

DEVICE	VERSION
Cisco Video Communication Server	X7.x →
Cisco Meeting Server	2.x →
Pexip Infinity	6.x →



Phone: + 47 916 48 444

contact@synergysky.com | www.synergysky.com