

RM-CG

CEILING ARRAY MICROPHONE



DM-CC

SPECIAL FEATURES OF THE COMPLETE ADECIA SOLUTION



For medium sized to bigger rooms, from 5 to 50 people



Easy to install and operate with a web based User Interface – works with all conferencing platforms

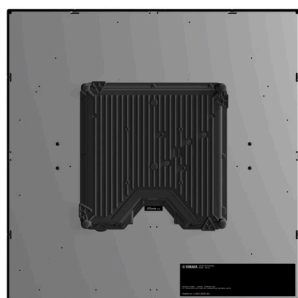


Professional Audio Quality for your Conference from Input to Output thanks to Yamaha's Technologies



Unique "Auto Room Tuning" sets all parameters of the devices to get the best acoustic settings for the room

 Dante



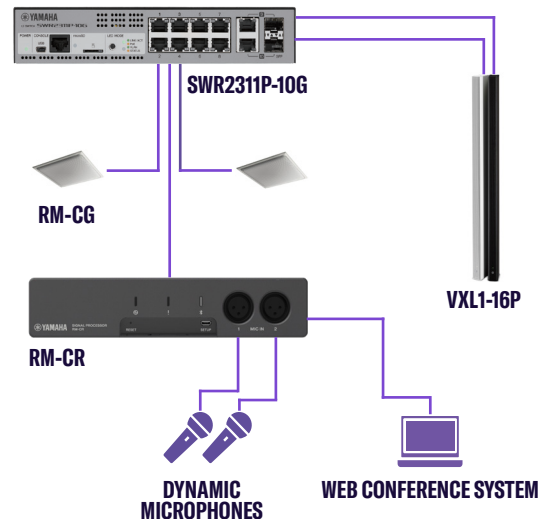
RM-CG CEILING ARRAY MICROPHONE

- FOCUSES ON VOICES AND ELIMINATE UNWANTED SOUNDS AND NOISES
- 4 DYNAMIC AUTO TRACKING BEAMS TO CAPTURE EVERYONE IN A ROOM,
- NO BLIND SPOTS
- BUILD IN AUDIO POST PROCESSING FOR OUTSTANDING INTELLIGIBILITY
 - ACOUSTIC ECHO CANCELLATION
 - DYNAMIC VOICE TRACKING
 - AUTO GAIN CONTROL
 - NOISE REDUCTION
 - DE-REVERBERATION (REMOVING IN-ROOM ECHO)
 - AUTO MIXING OF 4 DYNAMIC BEAMS
 - UNIQUE HUMAN VOICE ACTIVITY DETECTION (HVAD)
- DANTE AUDIO, CONTROL TRANSMISSION AND POE SUPPLY TROUGH 1 LAN CABLE
- 3 MOUNTING METHODS

SPECIFICATIONS

RM-CG CEILING ARRAY MICROPHONE		
General	Dimensions	560 (W) x 90 (H) x 560 (D) mm (including protrusion/microphone panel: 22mm)
	Weight	5.6kg
	Power Requirements	PoE (IEEE 802.3af)
	Maximum Power Consumption	7.2W
	Connector	RJ-45
	In Operation	Temperature 0°C - 40°C
		Humidity 30% - 90% (no condensation)
	Storage	Temperature -20°C - 60°C
		Humidity 20% - 90% (no condensation)
	Indicators	Front indicator (Mute/Unmute & Status), Network port indicator
	Mount	Ceiling mount, Wire mount, VESA mount
	Maximum Device Number with RM-CR	4
	Accessories (* Including a spare respectively)	Construction description, (Guarantee), Grille x 1, Screws for grille (M3 x 8mm) x 5*, Screw cover x 4, Cutting template x 1, C ring x 1, Screws for C ring x 2, Hanger angle x 1, Screws for hanger angle (M4 x 20mm) x 5*, Terminal cover x 1, Safety wire x 1, Binding band x 1, Clamp plate x 2
	Dust Protection	IP5X for dust protection (with terminal cover)
	Plenum Rating	UL2043 (with terminal cover)
Network	Ethernet	Dante, Remote Control, Web UI, PoE
	Cable Requirements	CAT5e or higher (STP)
	Audio I/O Dante	1in/2out
Audio	Sampling Rate	48kHz
	Bit Depth	24bit
	Latency	58ms (including signal processing)
	Frequency Response	160Hz - 16kHz (-10dB)
	Maximum Input Level of SPL (0dBFS)	117.8dB SPL
	Self Noise	-0.8dBA SPL
	SN Ratio (Ref. 94dB SPL at 1kHz)	94.8dBA
	Sensitivity	-23.8dBFS/Pa
Audio	Dynamic Range	118.6dBA
	Signal Processing	Multi-beam Tracking, Adaptive Echo Canceller, Noise Reduction, Dereverberation, Auto Mixer, Auto Gain Control, Parametric EQ, Output Gain

INSTALLATION EXAMPLE - CEILING SOLUTION



COMPONENTS

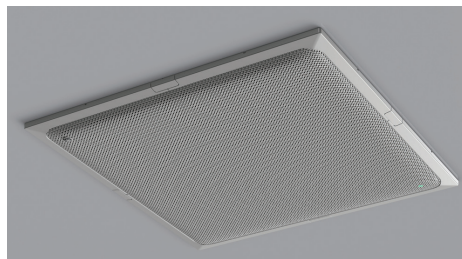
- RM-CR
- SWR2311P-10G
- RM-CG
- VXLI-16P

ONE RM-CG COVERS AN AREA OF ~ 50M²



MOUNTING METHODS

FLUSH MOUNT



WIRE HANGING



VESA



Nr.	Product Name	Description
CRMCGW	RM-CG (white)	YAMAHA Ceiling array Microphone RM-CG, white
CRMCGB	RM-CG (black)	YAMAHA Ceiling array Microphone RM-CG, black