



2022

POLY PRODUCT CATALOG FOR MICROSOFT TEAMS

POWERING SUPERB EXPERIENCES FOR MICROSOFT TEAMS



TABLE OF CONTENTS

COMMAND THE CONVERSATION	3
POLY END-TO-END SOLUTIONS	4
PRODUCTS	
AT THE DESK	5
ON THE GO	12
FOCUS ROOM	15
SMALL ROOM	18
MEDIUM ROOM	21
LARGE ROOM	24
CALL CENTER	27
IT TOOLS	29
PROFESSIONAL, CUSTOMER SUPPORT AND MANAGED SERVICES	32



COMMAND THE CONVERSATION

Poly creates premium audio and video products so you can have your best Microsoft Teams meeting—anywhere, anytime, every time. Our Teams certified headsets, video and audio-conferencing products, desk phones, analytics software and services are beautifully designed and engineered to connect people with incredible clarity. They're pro-grade, easy to use and work seamlessly with Microsoft Teams.

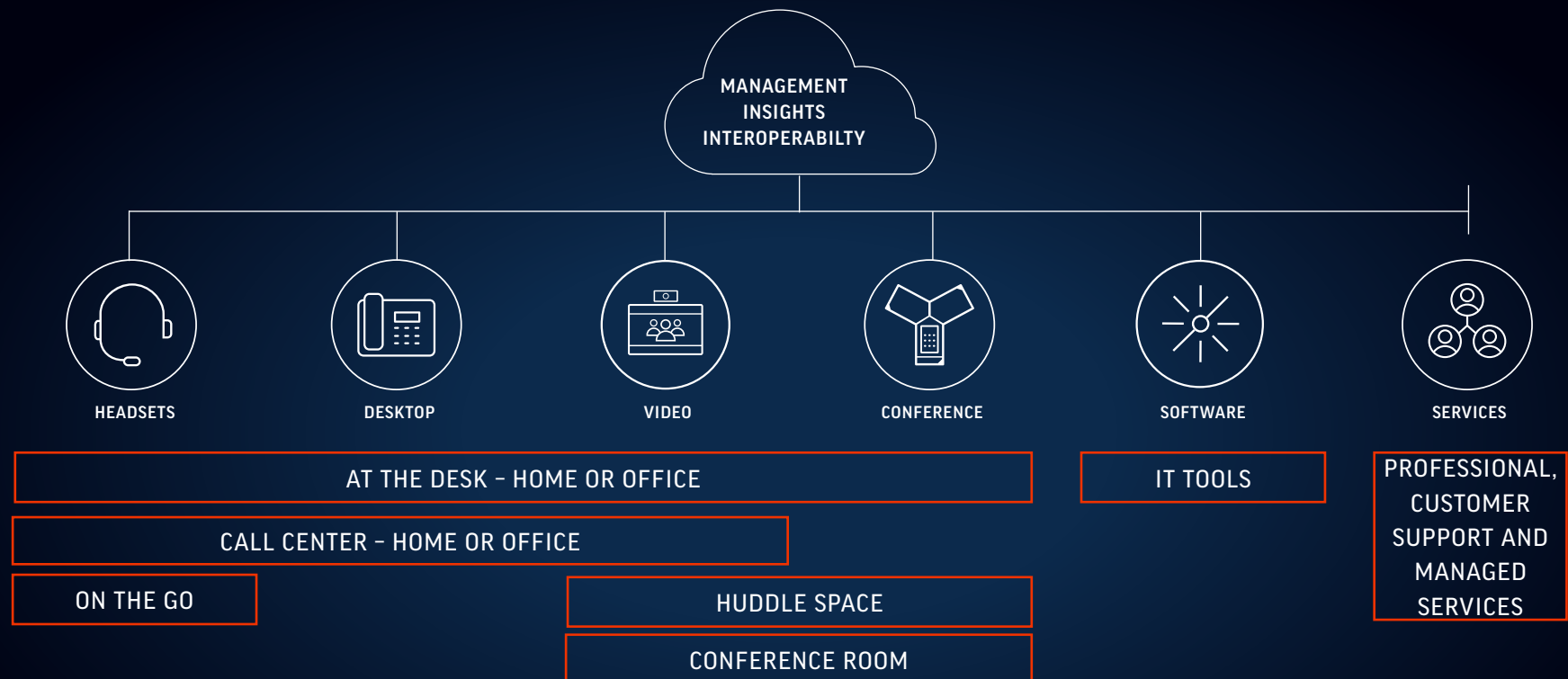
With Poly and Microsoft Teams, you'll do more than just show up, you'll stand out.

OWN THE MEETING WITH END-TO-END SOLUTIONS FOR MICROSOFT TEAMS

- Everywhere the communications and collaboration experience touch the individual, we're there. We make your connections simple and your interactions lifelike, so your collaboration is human to human—the technology fades into the background.
- We provide comprehensive management tools, ensuring devices are up and running with maximum efficiency. Raw data is aggregated into intelligent insights that identify usage trends, benefiting all aspects of business collaboration.
- Our services experts provides the breadth of help your organization needs from planning and design, deployment, optimization, support, and management of your environment.

OUR VALUE TO OUR CUSTOMERS AND PARTNERS

- **Business leaders**—More ways to improve communication and collaboration, and thus improve productivity and the bottom line.
- **IT managers**—One-stop shopping for all your communication device needs with insights that help anticipate maintenance needs, solve problems remotely, and reveal the ways users interact with their systems and work environment.
- **Business partners**—A reliable partner who understands and complements your business, giving our combined customers more of what they want.



AT THE DESK

AT HOME OR IN THE OFFICE



AT THE DESK

CORDED HEADSETS

IDEAL FOR

Professionals in the distracting open office/home office looking for a premium solution



BLACKWIRE 8225

- Flexible, noise-canceling microphone with Poly Acoustic Fence technology.
- Advanced hybrid active noise canceling (ANC) with three settings to optimize.
- On-call indicator lets others know when you're on a call.
- USB-A or USB-C connectivity.

IDEAL FOR

High call volume knowledge workers needing a corded headset for PC telephony



BLACKWIRE 5200 SERIES

- Connects to PC and Mac via USB-A/USB-C, smartphone, and tablet via 3.5 mm.
- Intuitive inline controls to answer/end calls, control volume, and mute.
- Dynamic EQ feature automatically adjusts audio for voice and multimedia use.

IDEAL FOR

Knowledge workers who need a modern, stylish corded headset for PC telephony



BLACKWIRE 3300 SERIES

- Features great audio and a modern design.
- Mobile connectivity with USB-A/USB-C and 3.5 mm (BW3315/BW3325).
- Intuitive inline controls for call answer/end, mute, volume +/-.
- Supports long-wearing comfort with a comfortable, padded headband and soft ear cushions.

AT THE DESK

DECT™ WIRELESS HEADSETS

IDEAL FOR

Enterprise and call center professionals who need to connect to desk phones, PCs, and/or mobile devices



SAVI 8200 OFFICE SERIES

- Three-way connectivity base – computer, desk phone, and mobile calls.
- Only DECT™ headset with active noise canceling (Savi 8220).
- Noise-canceling microphone with close conversation limiting.
- Convertible option available (Savi 8240/ Savi 8245).

Also suitable for CALL CENTER

IDEAL FOR

Enterprise and call center professionals who need to connect to PCs only



SAVI 8200 UC SERIES

- One-way only connectivity – computer.
- Only DECT™ headset with active noise canceling (Savi 8220).
- Compact USB adapter and travel case for portability.
- Noise-canceling microphone with close conversation limiting.
- Convertible option available (Savi 8240/ Savi 8245).

Also suitable for ON THE GO

IDEAL FOR

Ideal for use in financial, medical, and government, where Bluetooth® technology is typically prohibited



SAVI 7300 OFFICE SERIES

- Two-way connectivity – computer and desk phone.
- Designed to meet the DECT™ Security Step C—the highest security level from DECT™ Forum.
- Up to 2x more density than other DECT™ headsets.
- First Poly Microsoft Teams certified DECT™ headset with dedicated Microsoft Teams button.
- Noise-canceling microphone with Poly Acoustic Fence technology.

Also suitable for CALL CENTER

AT THE DESK

BLUETOOTH WIRELESS HEADSETS

IDEAL FOR

Office and home office professionals who need a premium stereo Bluetooth headset



NEW

VOYAGER FOCUS 2 UC SERIES

- Connect to a computer with the included BT700 adapter and to a mobile via Bluetooth v5.1.
- Keep your headset fully charged at all times using a desktop charging stand.
- Three levels of Advanced Digital Hybrid Active Noise Canceling (ANC).
- Advanced multiple microphone noise canceling with Acoustic Fence technology in a discreet boom.
- Ultra-comfortable headband and plush ear cushions.

IDEAL FOR

Office and home office professionals who need a premium stereo Bluetooth headset



CUSTOMER FAVORITE

VOYAGER FOCUS UC

- Active noise canceling (ANC) helps block sounds in noisy environments.
- Smart sensors route, auto-answer, and auto-mute calls.
- Hi-fi stereo sound creates a more immersive experience.
- Dynamic mute alert feature alerts when you try to talk while muted.

IDEAL FOR

Office and mobile professionals who prefer the freedom of hands-free calls all day at home or in the office



VOYAGER 4300 OFFICE SERIES

- Connect to your desk phone (with optional Voyager Office base), PC/Mac or your mobile phone with Bluetooth.
- Range up to 50 m/164 ft (line of sight) using Class 1 Bluetooth technology.
- Choice of USB-A or USB-C connectivity.
- Stay connected all day with charging base options.

AT THE DESK

BLUETOOTH WIRELESS HEADSETS

IDEAL FOR

Office and mobile professionals who want to make and take calls hands free in and out of the office



VOYAGER 5200 OFFICE SERIES

- Connect to your desk phone, PC/Mac or your mobile phone with Bluetooth.
- Range of up to 75 m/250 ft (line of sight) using Class 1 Bluetooth technology.
- Choice of USB-A or USB-C connectivity.
- Stay connected all day with charging base options.

Also suitable for ON THE GO

IDEAL FOR

Users who want the simplicity of one integrated device that delivers everything needed for video calls from a PC or Mac



POLY STUDIO P21

- High-performance enterprise-grade display.
- Adjustable, dynamic ambient lighting.
- Exceptional camera optics.
- Easy-to-connect USB device.
- Wireless mobile phone charging.
- Stereo speakers and directional microphone
- Integrated privacy shutter.
- Simple app for personal settings, software updates, support, health and wellbeing.

Pending Microsoft Teams certification.

IDEAL FOR

A premium video and audio experience from an enclosed personal workspace



POLY STUDIO P15

- High-performance 4K image sensor.
- Automatic low-light compensation.
- Automatic camera framing.
- Integrated privacy shutter.
- Powerful integrated speaker and multi-microphone array.
- Poly NoiseBlockAI and Acoustic Fence.

IDEAL FOR

Users who want a big upgrade over a laptop or monitor camera at an affordable price

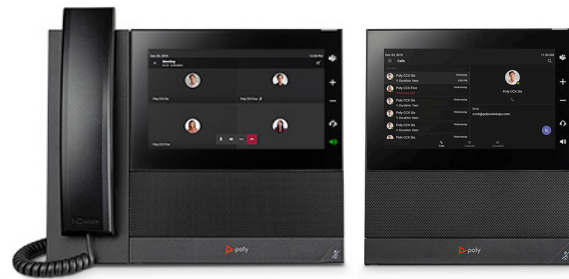


POLY STUDIO P5

- Exceptional camera optics.
- Automatic low-light compensation.
- Built-in directional microphone.
- Integrated privacy shutter.
- Small and rugged for portability.
- USB connection to wireless headset adapter.

IDEAL FOR

Managers and executives who want a larger screen



CCX 600

- 7 inch multi-touch LCD display, 2 USB ports (type A and type C), integrated Bluetooth and Wi-Fi.
- Dedicated Microsoft Teams button.
- Crystal clear sound with Poly HD Voice, Acoustic Fence and NoiseBlockAI technologies
- Your choice of handset model or no handset model for use with headset.

IDEAL FOR

Knowledge workers



CCX 500

- 5 inch multi-touch LCD display, 2 USB ports (type A and type C), integrated Bluetooth.
- Dedicated Microsoft Teams button.
- Crystal clear sound with Poly HD Voice, Acoustic Fence and NoiseBlockAI technologies
- Your choice of handset model or no handset model for use with headset.

IDEAL FOR

Office workers or common area phones (Microsoft Teams)



CCX 400

- 5 inch multi-touch LCD display; 1 x type A USB port.
- Crystal clear sound with Poly HD Voice, Acoustic Fence and NoiseBlockAI technologies
- Easily managed ensuring devices are up and running with maximum efficiency.
- Optional wall mount kit is available for wall mounting use cases.

ON THE GO



ON THE GO

BLUETOOTH WIRELESS HEADSETS

IDEAL FOR

Professionals who work in distracting environments, on the go or in the office/home office



VOYAGER 8200 UC

- Boomless, dual-paired, omni-directional microphones with enhanced digital signal processing (DSP).
- Dual-mode active noise canceling (ANC) lets you choose your preferred noise-reduction level.
- Smart sensors route, auto-answer, and auto-mute calls.
- Simple app for personal settings, software updates, support, health and wellbeing.

Also suitable for AT THE DESK

IDEAL FOR

Office and remote professionals who need a comfortable Bluetooth neckband headset with earbuds



VOYAGER 6200 UC

- Boomless design features four omni-directional microphones and active noise canceling (ANC).
- Comfort-fit earbuds deliver hi-fi stereo.
- Neckband vibrates to alert you to incoming calls.
- Pairs with up to eight devices and connects to two simultaneously.

Also suitable for AT THE DESK

IDEAL FOR

Mobile professionals who need a discreet, portable Bluetooth headset



VOYAGER 5200 UC

- All-day comfort, discreet wearing style.
- Clear and professional communication.
- Connect to your PC/Mac with the USB adapter or mobile phone with Bluetooth.
- Portable charging case for powering up anytime, anywhere.

IDEAL FOR

Ideal for enterprise professionals who split time between corporate office, home office, and travel



POLY SYNC 20

- Plug-and-play USB with convenient cord management.
- Bluetooth adapter option for cordless connectivity to PC (Poly Sync 20+).
- Built in Bluetooth for mobile phone connectivity.
- Up to 20 hours of talk time.
- Ability to charge mobile phone.
- Simple app for personal settings, software updates, support, health and wellbeing.

IDEAL FOR

Ideal for enterprise professionals who split time between corporate office, home office, and travel



POLY SYNC 10

- Enterprise-grade hi-fi audio and power amplifier.
- USB-A cable with an USB-C adapter included.
- Powered by USB connection.
- IP64 dust-and water-resistant.
- Slim, space-saving design.
- Simple app for personal settings, software updates, support, health and wellbeing.

FOCUS ROOM



IDEAL FOR

Focus rooms that need to connect to Microsoft Teams



POLY STUDIO FOCUS ROOM KIT FOR MICROSOFT TEAMS ROOMS

- Includes Poly Studio P15 and GC8.
- Designed to deliver clutter-free Teams meeting room experience, ideal for focus rooms with 1-2 people.
- Smart camera with auto-framing.
- Powerful Poly signature audio with NoiseBlockAI and Acoustic Fence technology.
- 8-inch touch console also supports HDMI content and USB port.
- Available with Lenovo ThinkSmart Core or Dell Optiplex (sold separately).

IDEAL FOR

Focus rooms that need an all-in-one video solution



POLY STUDIO FOCUS ROOM KIT FOR MICROSOFT TEAMS ROOMS

- Includes Poly Studio X30 and TC8.
- Designed to deliver clutter-free Teams meeting room experience, ideal for focus rooms with 1-2 people.
- Dynamic video with personal auto-framing.
- Powerful Poly signature audio with NoiseBlockAI and Acoustic Fence technology.
- Intuitive 8-inch touch console.

Also suitable for SMALL ROOMS

IDEAL FOR

Focus Rooms that need a plug and play USB solution for Microsoft Teams on PCs



POLY STUDIO P15

- High-performance 4K image sensor.
- Automatic low-light compensation.
- Automatic camera framing.
- Integrated privacy shutter.
- Powerful integrated speaker and multi-microphone array.
- Poly NoiseBlockAI and Acoustic Fence.

Also suitable for AT THE DESK

IDEAL FOR

Focus Rooms that need an all-in-one video solution



POLY STUDIO X30

- Cloud video apps such as Zoom and Microsoft Teams built right in — no PC or Mac required.
- Use open standards to connect to nearly any cloud video service.
- Block out audio distractions with NoiseBlockAI.
- 4K Ultra HD capable.
- Production-quality camera framing and tracking.
- Easily managed ensuring devices are up and running with maximum efficiency.
- Supported by Poly Lens.

SMALL ROOM



IDEAL FOR

Small rooms that need to connect to Microsoft Teams



POLY STUDIO SMALL AND MEDIUM ROOM KIT FOR MICROSOFT TEAMS ROOMS

- Includes Poly Studio R30 and GC8.
- Smart camera with speaker and group framing
- Powerful Poly signature audio with 15ft /4.5 m mic pickup range and NoiseBlockAI and Acoustic Fence technology
- Mono speaker with room-filling audio, ideal for small rooms
- 8-inch touch console also supports HDMI content and USB port
- Available with Lenovo ThinkSmart Core or Dell Optiplex (sold separately).

IDEAL FOR

Small rooms that need an all-in-one video solution



POLY STUDIO SMALL ROOM KIT FOR MICROSOFT TEAMS ROOMS

- Includes Poly Studio X30 and TC8.
- Designed to deliver clutter-free Teams meeting room experience, ideal for small rooms with 1-4 people.
- Dynamic video with personal auto-framing.
- Powerful Poly signature audio with NoiseBlockAI and Acoustic Fence technology.
- Intuitive 8-inch touch console.

IDEAL FOR

Small and rooms that need a plug and play USB solution for Teams on PCs



POLY STUDIO R30

- Smart camera with speaker and group framing.
- Powerful Poly signature audio with 15ft /4.5 m mic pickup range.
- Poly NoiseBlockAI and Acoustic Fence technology.
- Mono speaker with room-filling audio, ideal for small rooms.
- Easily managed ensuring devices are up and running with maximum efficiency.

Also suitable for FOCUS ROOMS

IDEAL FOR

Flexible/huddle rooms needing a USB/Bluetooth smart speakerphone



POLY SYNC 40

- Connect to PC via combined USB-A and USB-C cable; smartphone via Bluetooth.
- Bluetooth adapter option for cordless connectivity to PC (Poly Sync 40+).
- Three-microphone steerable array.
- High-performance, large speaker with up to 2.5 m/8 ft mic pickup.
- Up to 30 hours of portable use.
- Simple app for personal settings, software updates, support, health and well-being.
- Supported by Poly Lens.

MEDIUM ROOM



MEDIUM ROOM

VIDEO

IDEAL FOR

Medium rooms that need to connect to Microsoft Teams



POLY STUDIO SMALL AND MEDIUM ROOM KIT FOR MICROSOFT TEAMS ROOMS

- Includes Poly Studio and GC8.
- Dynamic video with speaker tracking camera.
- Powerful Poly signature audio covering 15 ft/4.5 m/3.6 m mic pickup range.
- Stereo speakers with room-filling audio, ideal for small to midsize rooms.
- 8-inch touch console also supports HDMI content and USB port.
- Available with Lenovo ThinkSmart Core or Dell Optiplex (sold separately).

Also suitable for SMALL ROOMS

IDEAL FOR

Medium rooms that need all-in-one video conferencing



POLY STUDIO MEDIUM ROOM KIT FOR MICROSOFT TEAMS ROOMS

- Includes Poly Studio X50 and TC8.
- Designed to deliver clutter-free Teams meeting room experience.
- Smart camera with speaker and group framing.
- Powerful Poly signature audio covering 15 ft/4.5m mic pickup range with NoiseBlockAI and Acoustic Fence technology.
- Stereo speakers with room-filling audio, ideal for small to midsize rooms.
- Intuitive 8-inch touch console.

IDEAL FOR

Medium rooms that need a plug and play USB solution for Microsoft Teams on PCs



POLY STUDIO USB

- The best audio quality in its class.
- Automatic speaker tracking.
- Centrally managed to ease the burden on IT.
- Easily managed ensuring devices are up and running with maximum efficiency.

Also suitable for SMALL ROOMS

MEDIUM ROOM

AUDIO

IDEAL FOR

Mid-size conference rooms where users bring their own laptops/smartphones or as tabletop audio device for Microsoft Teams Rooms



POLY SYNC 60

- Connect to PC (personal or Microsoft Teams Room) via combined USB-A and USB-C cable, smartphone via Bluetooth.
- Six-microphone steerable array.
- High-performance, twin speakers with up to 3 m/10 ft mic pickup.
- Always on with AC power.
- Two units can be paired wirelessly for larger meeting spaces.
- Two USB ports for smartphone charging.
- Simple app for personal settings, software updates, support, health and wellbeing.

LARGE ROOM



IDEAL FOR

Large rooms that need to connect to Microsoft Teams Rooms



POLY STUDIO LARGE ROOM KIT FOR MICROSOFT TEAMS ROOMS

- Includes Poly Studio E70 and GC8.
- Designed to deliver clutter-free Teams meeting room experience.
- Smart camera experiences driven by Poly DirectorAI with Studio E70 camera so everyone is seen clearly.
- 8-inch touch console also supports HDMI content and USB port.
- Available with Lenovo ThinkSmart Core or Dell Optiplex PC (sold separately).
- Add a certified Trio phone or Poly-tested DSP compatible device.

IDEAL FOR

Large rooms needing custom designed video conferencing



POLY STUDIO LARGE ROOM KIT FOR MICROSOFT TEAMS ROOMS

- Modular-based Poly G7500 system allows maximum flexibility and integration with room audio.
- Select from flexible cameras and microphone options to match the room requirements.
- Poly NoiseBlockAI and Acoustic Fence technology keep out audio distractions.
- Simplified setup with USB camera support and Ethernet cabling for microphones.
- Intuitive 8-inch touch console.

*Certification pending. Poly RealConnect required to connect to a Microsoft Teams environment.

IDEAL FOR

Medium and large rooms looking for a camera with advanced tracking algorithms for group framing and speaker tracking



POLY STUDIO E70

- Dual cameras with 4K sensors.
- Pinpoint-accurate speaker tracking and group framing from Poly DirectorAI technology.
- Motorized, integrated electronic privacy shutter.
- Mics are disabled (except for tracking purpose)
- Easily managed ensuring devices are up and running with maximum efficiency.

LARGE ROOM

AUDIO

IDEAL FOR

Large and mid-size rooms requiring the best audio conference experience, with versatile options controlling Poly video conferencing solutions



TRIO C60

- Poly signature audio with 22 kHz audio, up to 6 m/20 ft mic pickup range.
- Meeting initiation in seconds with one-touch join.
- Wi-Fi audio conferencing 2.4-5GHz (MIMO).
- Daisy-chain up to three conference phones for extra-large and unique spaces.
- Pairs with Microsoft Teams Rooms solutions.
- Easily managed ensuring devices are up and running with maximum efficiency.

Check for regional availability.



CALL CENTER

AT HOME OR IN THE OFFICE

IDEAL FOR

Call center employees who need an all-day headset



ENCOREPRO 500 SERIES

- Aircraft-grade aluminum joints; unibody boom construction.
- Audible and visual cues for optimal boom positioning.
- High-quality wideband audio support with SoundGuard hearing protection.
- USB and QD models available for ultimate flexibility in connection.

IDEAL FOR

Connecting Headsets to Microsoft Teams in Call Centers



DA SERIES

- Call controls and Quick Disconnect for walkaway convenience.
- Superior noise and echo cancellation for richer, clearer conversations.
- USB-A and USB-C on the same cable.
- Simple app for personal settings.

IDEAL FOR

Office-based and call center professionals who require continuous battery life and the ability to move throughout the office



VOYAGER 4245 OFFICE

- The lightest Bluetooth headset for contact center use.
- Three wearing options in a single SKU.
- Wireless range up to 328 ft/100 m.
- Continuous battery life*.
- Noise-canceling microphone.
- Microsoft Teams version with dedicated Teams button for instant access.

* Use of spare charged battery required

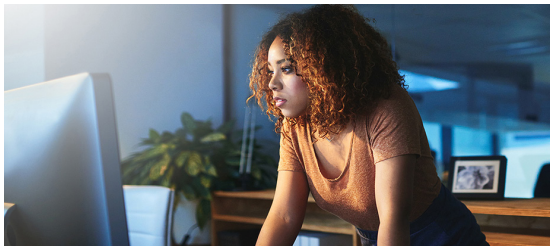
Also suitable for AT THE DESK



IT TOOLS

IDEAL FOR

Enterprises needing cloud-based insights and management of Poly's latest voice, video, and headsets



POLY LENS

- Quick and easy device onboarding.
- Single Sign-on for easy account access.
- Intelligent news-feed like device highlights identifying the most important actions and insights.
- Multi-view, comprehensive inventory tables with filters.
- Individual or bulk management through device policy provisioning.
- Efficient cloud service requires no capital expense purchasing, powering and maintaining servers.

IDEAL FOR

Enterprise who need interoperability between legacy systems and Microsoft teams



REALCONNECT

- Cloud-based video interoperability service connecting endpoints and software apps into Microsoft Teams.
- Leverage standards-based video endpoints to make the most of your investment.
- Simplified meeting entry via Exchange and Outlook integration with one-touch dial.
- Available as stand alone cloud service or part of Poly Clariti.

PROFESSIONAL, CUSTOMER SUPPORT AND MANAGED SERVICES

A man with brown hair and a beard, wearing a grey ribbed sweater, is shown in profile, talking on a black corded telephone. He is sitting at a desk in an office environment. Behind him is a large black computer monitor. To the right, a green leafy plant is visible. The background is slightly blurred, showing office shelves and windows.

PROFESSIONAL, CUSTOMER SUPPORT AND MANAGED SERVICES

IDEAL FOR

Enterprises, hybrid workforces and personal users of all Poly devices

POLY+

- Unlimited, global 24x7 technical support providing you expert help how and when you need it.
- Advance hardware replacement* with pre-paid next-business-day shipping ensuring business continuity.
- Ecosystem Cloud Partner Support to improve response times in Poly-enabled ecosystem cloud solutions.
- Exclusive professional services discounts to save your business time and money.
- Upgraded access to premium software delivering a superior user experience and greater user adoption.

IDEAL FOR

IT directors who need help realizing the benefits underpinning their UC business case

PLAN & DESIGN

- Poly Microsoft Teams Consulting.
- Poly Envisioning for Microsoft Teams.
- Poly Network Readiness Service for Microsoft Teams.
- Poly PBX Assessment Service for Microsoft Teams.

IDEAL FOR

IT directors looking to convert their plan into reality and quickly achieve the anticipated benefits

DEPLOYMENT

- Poly RealConnect Integration and Onboarding Services.
- Poly Microsoft Teams Rooms Installation Service.
- Poly Microsoft Teams Rooms Onboarding and Assessment Service.
- Poly User Migration Service for Microsoft Teams.
- Poly PBX Migration Service for Microsoft Teams.

IDEAL FOR

IT directors who want to extract additional value from your existing investments

OPTIMIZATION

- Poly Adoption Consulting Service for Microsoft Teams.

Worldwide Corporate Headquarters

345 Encinal Street
Santa Cruz, California 95060

Toll-Free: 800-544-4660

Phone: 831-426-5858

Fax: 831-426-6098

Questions: poly.com/contact

How to buy: poly.com/contact-sales

Learn more online: poly.com

Poly locations around the world: poly.com/office-location