

# RM-TT

## TABLETOP ARRAY MICROPHONE



### SPECIAL FEATURES OF THE COMPLETE ADECIA SOLUTION



HIGH SCALABILITY

For medium sized to bigger rooms, from 5 to 50 people



PLUG & PLAY

Easy to install and operate with a web based User Interface – works with all conferencing platforms



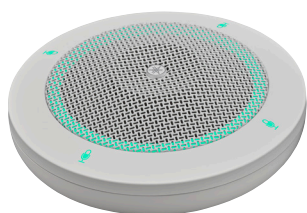
BEST AUDIO QUALITY

Professional Audio Quality for your Conference from Input to Output thanks to Yamaha's Technologies



AUTO TUNE SETUP

Unique “Auto Room Tuning” sets all parameters of the devices to get the best acoustic settings for the room



### RM-TT TABLETOP ARRAY MICROPHONE

- DANTE BOUNDARY MICROPHONE WITH SIMPLE CONNECTION
- FULL DIGITAL AUDIO PROCESSING INCLUDED
  - ADAPTIVE ACOUSTIC ECHO CANCELLATION
  - NOISE REDUCTION
  - DE-REVERBERATION
  - HUMAN VOICE ACTIVITY DETECTOR
  - AUTO GAIN CONTROL
- 4 HIGH-QUALITY MICROPHONE ELEMENTS
- 6 SELECTABLE CAPTURE MODES

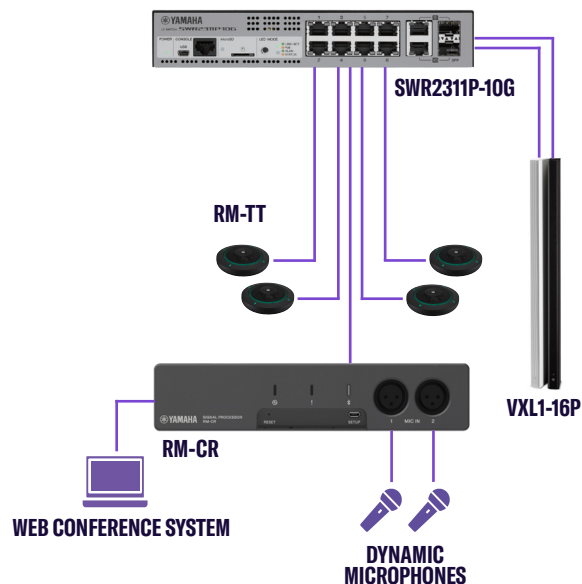
RM-TT IS ALSO A STAND-ALONE DANTE MICROPHONE, ABLE TO CONNECT TO ANY DANTE RECEIVER (POE INJECTOR NEEDED)



## SPECIFICATIONS

RM-TT TABLETOP MICROPHONE		
General	Dimensions	140 (W) × 41.5 (H) × 140 (D) mm
	Weight	310g
	Power Requirements	PoE (IEEE 802.3af)
	Maximum Power Consumption	4.5W
	Connector	RJ-45
	In Operation	Temperature: 0°C - 40°C Humidity: 30% - 90% (no condensation)
	Storage	Temperature: -20°C - 60°C Humidity: 20% - 90% (no condensation)
	Indicators	Mute indicator (Mute/Unmute), Status indicator, Network port indicator
	Maximum Device Number with RM-CR	14
	Accessories	Installation manual, Tabletop mounting adapter, Screw for mounting x 3, Spacer x 3
	Ethernet	Dante, Remote Control, PoE
	Cable Requirements	CAT5e or higher (STP)
	Audio I/O	Dante: 1in/2out
	Sampling Rate	48kHz
	Bit Depth	24bit
	Frequency Response	160Hz - 16kHz (-10dB)
	Maximum Input Level of SPL (0dBFS)	106.8dB SPL
	Self Noise	6.3dBA SPL
	SN Ratio (Ref. 94dB SPL at 1kHz)	87.7dBA
	Sensitivity	-12.8dBFS/Pa
	Dynamic Range	100.5dBA
	Signal Processing	Auto Voice Tracking, Selectable Polar Pattern (Cardioid, Hyper-cardioid, Super-cardioid, Omnidirectional, Bidirectional, Toroid), Adaptive Echo Canceller, Noise Reduction, Dereverberation, Auto Mixer, Auto Gain Control, Parametric EQ, Output Gain

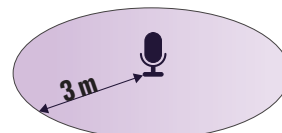
## INSTALLATION EXAMPLE - TABLETOP SOLUTION



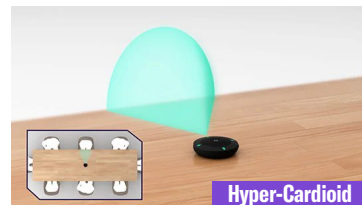
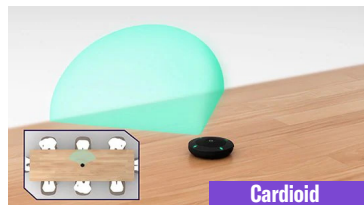
## COMPONENTS

- RM-CR
- SWR2311P-10G
- RM-TT
- VXLI-16P

## ONE RM-TT COVERS AN AREA OF 3M RADIUS



## Flexible usage with 6 different capture mode characteristics



Nr.	Product Name	Description
CRMTTW	RM-TT (white)	YAMAHA Tabletop array Microphone, white
CRMTTB	RM-TT (black)	YAMAHA Tabletop array Microphone, black