



EPOS

The Power of Audio

EPOS
Enterprise Solutions



Unleash Your Potential and Achieve More

EPOS designs, manufactures, and sells high-end audio and video solutions for business professionals and gamers around the world.

Based on decades of psychoacoustic research, EPOS designs audio and video solutions with unique algorithms and acoustics that provide the best conditions for the brain, enabling professional users to communicate and collaborate effectively with better concentration and less energy spent.

Owned by the world-leading hearing healthcare and audio technology group, Demant, and with headquarters in Copenhagen, Denmark, EPOS builds on more than 115 years' audio expertise and operates in a global market with offices and partners in more than 60 countries.

Find more information at
eposaudio.com

Stay Focused with Audio Designed for Your Brain

Did you know that while we hear with our ears, we listen with our brain?

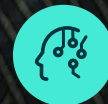
At EPOS we put this principle at the heart of our product design process – an approach we call EPOS BrainAdapt™.

EPOS BrainAdapt™ is a group of pioneering technologies that work together to improve cognitive performance.

Audio and video solutions built on EPOS BrainAdapt™ technology minimizes the amount of energy it takes your brain to process sound – leading to better performance and improved communication throughout the work day.



Improved
focus



Better
concentration



Increased
productivity

Product Line Overview



IMPACT Line

When Talk Matters

Headset solutions for professionals working in energetic contact centre and office environments, spending majority of time at or around their desks talking with customers.

- Voice Clarity for clear calls
- Comfortable all-day use
- Hassle-free communication



IMPACT
1000 Series



IMPACT
5000 Series



IMPACT
DW Series



IMPACT
D Series



IMPACT
600 Series



IMPACT
200 Series



IMPACT
100 Series



ADAPT
600 Series



ADAPT
500 Series



ADAPT
300 Series



ADAPT
200 Series



ADAPT
100 Series



ADAPT
Presence Series



EXPAND
Capture 5*



EXPAND
80 Series



EXPAND
30 and 40 Series



EXPAND
Vision 1



EXPAND
Vision 5



EXPAND
Vision 3T



EXPAND
Vision 1M



EXPAND
Control



ADAPT Line

Work Your Way

Headset solutions for professionals participating in meetings or calls or working remotely from other locations.

- Clear audio anywhere
- Stay focused and concentrate
- Contemporary looks



EXPAND Line

Seamless Collaboration

Experience speakerphones, USB webcams, and video conferencing solutions designed for modern professionals. Collaborate effectively with colleagues and customers regardless of location.

- Outstanding audio
- Razor-sharp video
- Frictionless collaboration

* Only for Microsoft Teams Rooms on Windows compute unit



IMPACT

When Talk Matters

Whatever your line of business, clear and seamless communication is essential for excellence. And in a world where 40 percent* of professionals spend long durations on the phone, and where noisy and open work environments are the norm, this proves even more important. It's

for this reason that our products are designed and crafted with superior materials that filter out unwanted noise, clarify speech and are fully compatible with all your devices and systems. So you get perfect communication, every single time.

* Insights report: "The way we work 2022/23"



IMPACT
1000 Series
Bluetooth® headsets



IMPACT
5000 Series
DECT headsets



IMPACT
DW Series
DECT headsets



IMPACT
D Series
DECT headsets



IMPACT
600 Series
Wired headsets



IMPACT
200 Series
Wired headsets



IMPACT
100 Series
Wired headsets



ADAPT

Work Your Way

Modern workplaces are evolving every day – becoming more mobile, more versatile, and more flexible – which is why for some, a personal headset is not just a preference but a necessity.

The opportunity of hybrid work is one that everyone agrees on with 79 percent* of end users reporting

that they see the benefits of premium audio in the workplace, including time savings, cost savings and the freedom to work anywhere. Whether in the office, open workspace, at home or on the go, we offer best-in-class audio quality that can adapt to any situation.



**ADAPT
600 Series**
Bluetooth® headsets



**ADAPT
500 Series**
Bluetooth® headsets



**ADAPT
300 Series**
Bluetooth® headsets



**ADAPT
200 Series**
Bluetooth® headsets



**ADAPT
100 Series**
Wired headsets



**ADAPT
Presence Series**
Bluetooth® headsets

* Insights report: "Understanding Sound Experiences 2021"



EXPAND

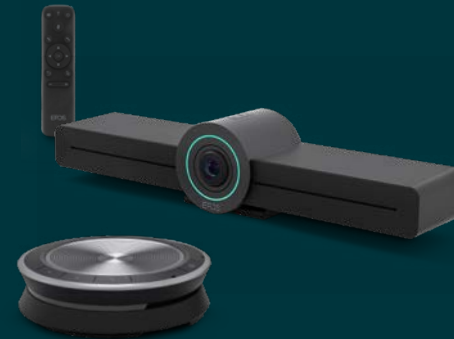
Seamless Collaboration

As businesses embrace hybrid work, conferencing solutions are becoming increasingly essential. We design speakerphones, USB webcams, and video conferencing solutions that let professionals collaborate with ease,

no matter where they are. From small focus spaces to large meeting rooms, our products deliver razor-sharp video and excellent audio. Be seen and heard clearly on any conference call, anywhere.



EXPAND Vision 5
Video Conferencing Solution



EXPAND Vision 3T
Video Conferencing Solution



EXPAND Control
Meeting room controller



EXPAND Vision 1M
USB Camera



EXPAND Vision 1
Personal USB webcam



EXPAND

Speakerphones

Connecting colleagues is a major challenge of today's hybrid workplace. With the EXPAND Line, we've raised the bar when it comes to teamwork.

All our speakerphones help you seamlessly and instantly set up conference calls with superior audio, are easy to connect, intuitive to

manage, and configure themselves automatically with all your devices.

Designed for personal and shared use, at the office, and on the go, the EXPAND Line gives you the freedom to turn any space into a hassle-free virtual meeting room, anywhere in the world.



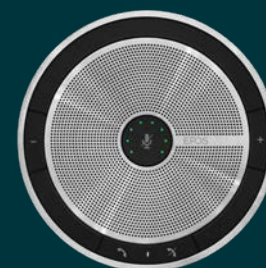
EXPAND 80 Series
Bluetooth® speakerphone



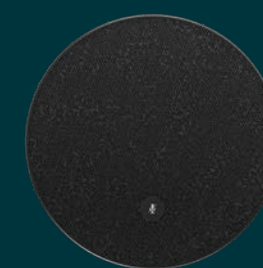
EXPAND 40 Series
Bluetooth® speakerphone



EXPAND 30 Series
Bluetooth® speakerphone



EXPAND 20 Series
Wired speakerphone



EXPAND Capture 5*
Intelligent speaker for Microsoft
Teams Rooms (MTR) Systems

EPOS Technology

We divide our technologies into 3 subcategories: EPOS AI™, EPOS Sound™ and EPOS Voice™ to ensure a clear understanding of our technical spectrum at all ends. Our technologies span over the range of Artificial Intelligence to Sound Experience and Microphone Performance.

EPOS AI™ – Creates an optimized audio experience for the B-side

Through our commitment to exploring the Power of Audio we have developed an optimized audio experience that pushes your communication further and boosts your ability to succeed. With our user in mind, we implemented EPOS AI™ – a machine learning system embedded in EPOS audio devices that processes audio and takes decisions independently. By interacting with advanced beamforming and noise reduction algorithms, this system enables the device to automatically adapt to your speech while studying your sound environment. The technology within EPOS AI™ then successfully reduces the ambient sounds in your environment, thus, transmitting your speech loud and clear to your listener – where it matters most.

We aim to stay at the forefront of what is technically possible. With the ADAPT 660 we have launched the first edge AI based headset in the entire UC space, thus laying the groundwork to be pioneers within audio technology.

EPOS Sound™ – Sound as if you were right there

EPOS Sound™ makes the most out of your premium audio device by delivering a natural listening experience. Through continuous monitoring of ambient sound and varying noise levels, our technology helps you concentrate while taking care of your hearing: creating an augmented and immersive audio experience that sounds as if you are speaking to someone face-to-face or are right there in the same environment. No matter where you are. What's more, you can listen to your teammates or keep an ear out for announcements without removing your headset. For more focus, block out background noise with ease and enjoy the benefits of EPOS Sound™ – while watching your performance and energy levels rise.

EPOS Voice™ – Be understood in any environment

EPOS Voice™ improves your speech intelligibility and provides for a better conversation by creating an acoustic lens to focus on your speech. Through removing remaining noise disturbances, it ensures a more natural reproduction of the human voice. EPOS Voice™, furthermore, recognizes your environment in order to eliminate unpleasant background noise to clarify your sound picture. Making sure you can be heard no matter where you are – for the ultimate audio experience. With optimal control of noise levels, this technology allows for an effortless use of your digital voice assistants anytime, anywhere.



Online Compatibility Guide

Find the right headset easily

Looking for a business headset for a particular phone, device or platform?

Use our online Compatibility Guide to find the choices available to you and to learn about the different headset features.

For more information, please visit:

eposaudio.com/enterprise/headsets/compatibility-guide

Try our products

EPOS' professional trial program gives you the opportunity to experience a full range of headsets, speakerphones and video conferencing solutions before you decide on the best solutions for your businesses.

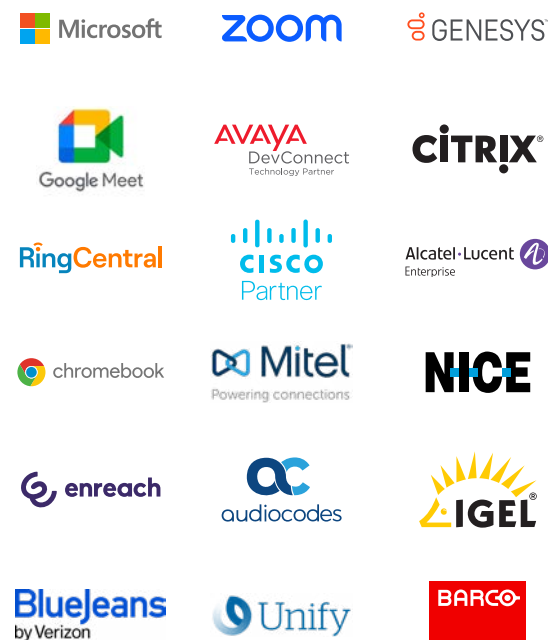


Our Partnerships

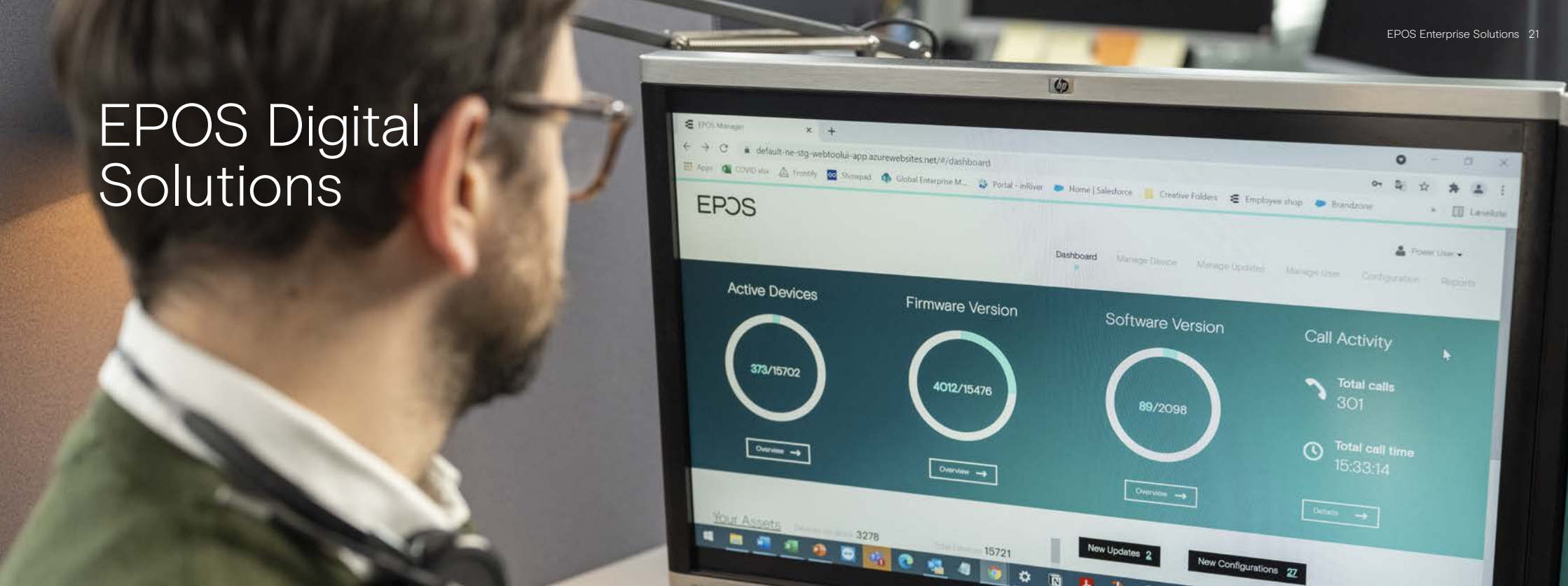
EPOS' partnerships with other technology-driven companies and vendors have a common goal - to simplify your daily business.

We are your one-stop audio solution provider for all your business communication needs.

For more information, please visit eposaudio.com



EPOS Digital Solutions



EPOS Manager for IT Administrators

EPOS Manager has been developed for companies with a need to control their UC environment in a fast and secure way. By installing the client application, EPOS Connect, on your end users' PCs, you gain a complete overview of all deployed devices and access to new updates and settings.

For companies with several locations, it's possible to manage, update and control settings for all end-users in

the entire organization. For improved security, all communication and data are encrypted and no sensitive data is stored.

The resulting simplification of the asset, update and configuration management gives great savings in both time and money.

EPOS Connect for Headset and Webcam Users

EPOS Connect is the client application running in the background on the headset or video user's PC. The solution ensures that EPOS work seamlessly with various leading softphones and give you access to the latest firmware updates and personalized settings.

EPOS Connect is uniquely configured to either work together with a signed-up company account on

EPOS Manager or as a stand-alone application for smaller companies or personal use.

Designed to be simple to use, the application allows EPOS headset, video and speakerphone users to enhance and personalize their experience and productivity simply and quickly.

Service and Support

We've Got You Covered



On-premise support

Have our highly skilled support team come on site for troubleshooting

Remote support

Receive support remotely and at any time to identify and solve your issues

Round-the-clock, Monday to Saturday

Request support: eposaudio.zendesk.com/hc/requests/new

Additional support services:

- 2 years full warranty on all devices
- More than 600 help tools
- Quick guides, manuals, how-to videos, articles

Find out more: eposaudio.com/enterprise/support

E-mail: contact@eposaudio.com

THE POWER OF AUDIO

EPOS

EPOS Group A/S
Industriparken 27
2750 Ballerup, Denmark
eposaudio.com