

THREATLOCKER

ThreatLocker Control Suite

Get unprecedented visibility and control of your cybersecurity

The ThreatLocker Control Suite combines Application Whitelisting, Ringfencing™, Storage Control, and Elevation Control solutions in ways that make security simple.

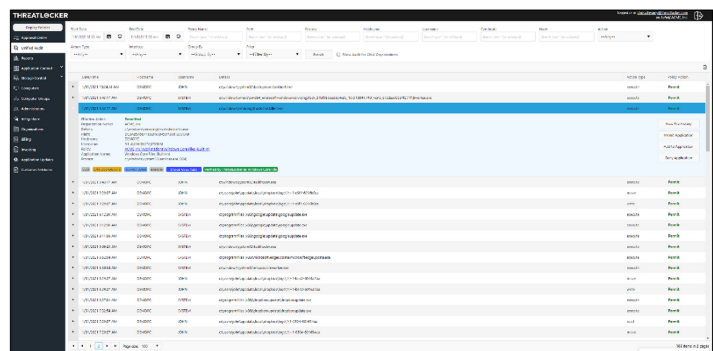
ThreatLocker is leading the cybersecurity market towards a more secure approach of blocking unknown application vulnerabilities.



Full Visibility and Control in Real-Time

The **ThreatLocker Control Suite** gives you full visibility and control by providing a Unified Audit of all applications, libraries, and scripts opened in real-time - including the computer, hash, certificate, process, and user.

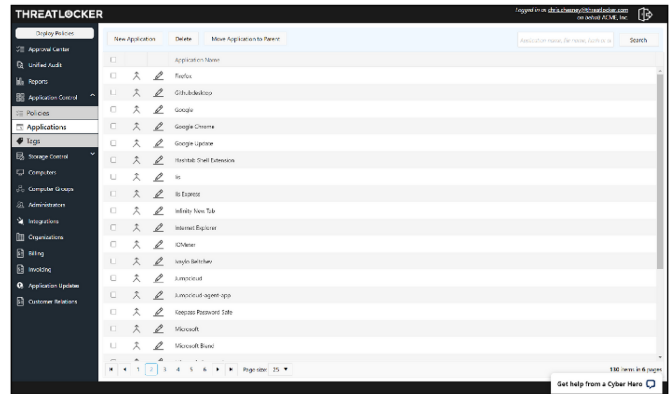
When combined with **ThreatLocker Storage Policies**, you have the ability to view a detailed description of all files and documents accessed, including what has been changed, deleted, or moved.



Ringfence™ Your Applications

Add controlled, firewall-like boundaries around your applications to stop them from interacting with other applications, accessing network resources, registry keys, and even your files.

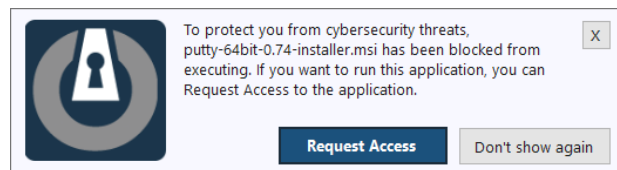
Ringfencing™ is extremely effective at stopping fileless malware and exploits and makes sure software does not step out of its lane and steal your data.



Block by Default

Application Whitelisting is the gold standard in protecting against ransomware, viruses, and other malicious software. The ThreatLocker solution combines advanced software and service, allowing you to deploy application whitelisting in a few hours, without the management overhead.

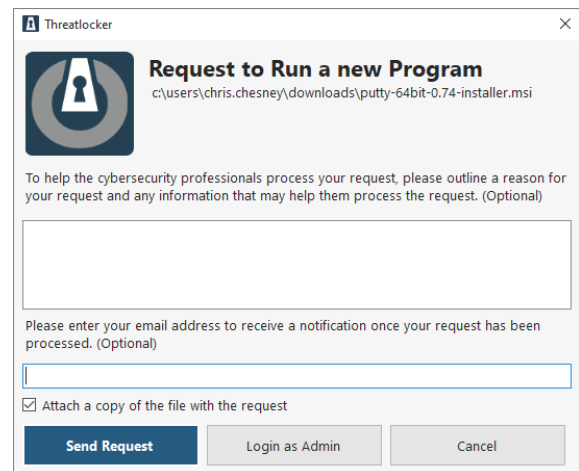
Our 24-hour operations center continuously monitors for application and operating system updates, so you don't have to worry about adding every new file to the application whitelist every time that Microsoft, Google, or another vendor releases an update.



Control Administrative Privileges

ThreatLocker Elevation Control gives you the ability to create access policies for individuals on specific applications.

The addition of **Elevation Control** combined with **ThreatLocker Control Suite** enables MSPs to control what applications can run, who can access them and how they interact in an organization's environment. Once applications are elevated, users cannot jump to infiltrate connected applications within the network.



www.threatlocker.com

info@threatlocker.com

(833) 292-7732

THREATLOCKER