

# why **smart**Infrastructure for Kubernetes?

## accelerate containerized application delivery for your Kubernetes deployment, day 1 to day n

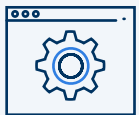


### put your Kubernetes admins in the drivers seat with self-service infrastructure provisioning in under 15 minutes

**control relevant aspects of your data plane through a native API that works consistently at scale** through an API-first approach to storage with the nebulon CSI driver

**build a fully-functional Kubernetes deployment in 15 minutes** with powerful automation capabilities that seamlessly integrate with Ansible and Helm to deploy production-ready Kubernetes clusters with on-prem compute and storage

**fully automate everyday storage requests, so you can stop wasting time on minor tasks** with nebulon's CSI driver's lightweight integration into native K8s tools, Kubernetes owners are able to provision their own data services



### enjoy the benefits of simplified, on-going Kubernetes infrastructure maintenance with the nebulon cloud control plane

**relieve the burden of dealing with the storage subsystems** that are tedious to manage and require specialized expertise to maintain

**enjoy true automated maintenance across your entire storage deployments** including monitoring, issue resolution, performance and capacity optimizations

**tap into deep insights and analytics at the data layer** which helps enterprises identify, resolve and prevent (with AIOps) issues

**upgrade your data plane and drive firmware with simple "one click upgrades."** ensures your infrastructure is free from vulnerabilities from software issues and the latest enhancements are easily accessible



### flexible as the needs of your data center and can be easily accommodated for other data center applications

**take the guesswork out of provisioning storage and server resources to a variety of applications** with a catalog of preconfigured application templates

**need to change your workload? It's now a breeze.** nebulon's ability to publish user-defined boot volumes and images in the application template makes it easy to change applications when and where you need to

## with smartInfrastructure, roll out new environments consistently with a set of pre-defined application templates

configure Kubernetes baseline environments rapidly, reliably, and consistently with specific application templates

### build 10, 20, 30+ consistent Kubernetes deployments

a set of pre-defined application templates, that ensure your product teams are using approved operating systems, with patch levels and configuration that your IT team can easily support and doesn't slow down your developers

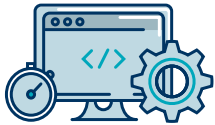
### switch environments easily

#### with boot drive image access, switching environments is as easy as 1-2-3

simply delete you nPod & change the application template. With SANs lack of boot drive image access, changing environments is cumbersome as it forces you to reinstall the OS with a new OS and then provision a specific storage volume

## what is smartInfrastructure?

nebulon smartInfrastructure is server-embedded, infrastructure software delivered as-a-service, which offers the benefits of the public cloud on-premises, from core to edge for any application—containerized, virtualized or bare-metal



#### RAPID TIME-TO-VALUE

rapid composability for virtualized, containerized & bare metal applications from core to the edge



#### DELIVERS CLOUD-LIKE OPERATIONS

AI-assisted and API-first infrastructure management delivered as-a-service



#### COST-EFFICIENT

avoiding HCI improves app server density up to 33%; avoiding external storage reduces costs up to 50%



#### FUTURE-PROOFED

protect your investments with flexible infrastructure both now and in the future



#### NO NEW VENDOR REQUIRED

smartInfrastructure comes as a standard option from your favorite server vendor

[nebulon.com](https://nebulon.com)