



ELECTRIC BIKE ACCESSTM
FRALEIGH HAIBIKE LAPIERRE

INFORMATION PACK

ELECTRIC BIKE ACCESS | AN ELECTRIC BIKE FOR EVERYONE



Content page

Our brands

What is a salary sacrifice

Benefits

Employee savings

Post rental agreement options

Commercial benefits to employer

Why use Electric Bike Access for your employees

How it works

FAQ - employer

FAQ - employee

Customer support information



Our brands

Raleigh is one of the world's oldest and best-known bike brands. Established in 1887 in Nottingham England, we're still based in our home town. Raleigh is best known for its iconic bikes such as the Raleigh Chopper and Burner and more recently our range of electric bikes.

Raleigh is now part of the **Accell Group**, a European-based company who own a collection of bicycle brands that include, **Haibike and Lapierre**. Our partnership with Accell Group allows us to share knowledge, technology and innovations between these brands to deliver the best possible product for our customers.

Haibike was established in 1995 in Schweinfurt, Germany and is now one of the global leaders in premium adventure and off-road electric bikes. Over the last 15 years Haibike has developed some of the most powerful, technically advanced and stylish electric bikes on the market.

Lapierre has been producing bikes since 1946 in Dijon, France. The brand sets itself apart from the competition with road and off-road bikes that are developed with and ridden by top athletes across the globe from the Tour De France to UCI mountain bike races. Lapierre offers a bike to suit all, from sport and leisure to bikes for aspiring athletes.

Electric Bike Access offers a straightforward process to help you find your perfect bike. We have easy access to all three brands, and whether you are looking for an adventure electric bike from Haibike, a mountain bike from Lapierre or an urban electric bike from Raleigh, we are guaranteed to have a bike that suits your lifestyle.



What is a salary sacrifice

Electric Bike Access is a salary sacrifice benefit scheme that allows easy, affordable access to the **best electric bikes on the market from Raleigh, Haibike and Lapierre.**

As well as a bike, employees can choose to add a selection of accessories to the scheme to be paid back as part of the monthly rental. These accessories could include but are not limited to, helmets, lights, locks, cycling gloves.

Salary sacrifice is when the employee agrees to give up an amount of their pre-tax salary in exchange for a product or service, and in this case an electric bike. The amount is chosen by the employee, but the employer can set a maximum value which employees cannot exceed.

Traditional salary sacrifice schemes involve lots of administration and a complicated purchase process for the employee. Electric Bike Access takes all of that away with a digital sign-up form being the only administration required. Simply deduct the chosen monthly amount from the employees pre-tax salary and we will do the rest.



Benefits

For the employee

We offer simple, easy access to the best electric bikes with up to 42% discount off retail prices. We have bikes to suit all needs from commuting to off-road trail riding.

Savings are made by paying for the bike pre tax, if your salary is in the lower tax bracket you can save 32%. For those in the higher tax bracket the savings are 42% on the retail price.

We offer a hassle free and fast sign-up process with no credit checks. You choose where and when you would like the bike to be delivered, alongside multiple ownership options after the 12 month rental period has ended.

For the Employer

We offer dedicated support for each business, no up-front costs and flexible payment options are available on request. Our scheme is easy to manage, cost effective and a great employee benefit to help with staff retention.

Implementing Electric Bike Access into your business is quick and easy with only a short digital sign-up form. You can approve and track all agreements through your unique digital Electric Bike Access dashboard.

Electric Bike Access could save your business time, money and at the same time improve staff well being, CSR and productivity within the work place.



Employee savings



Raleigh Motus Grand Tour

RRP: £2250

Electric Bike Access (standard tax bracket): £1530

Savings: £720

Electric Bike Access (high tax bracket): £1305

Savings: £945



Haibike Trekking 7.0

RRP: £2699

Electric Bike Access (standard tax bracket): £1835.32

Savings: £863.68

Electric Bike Access (high tax bracket): £1565.42

Savings: £1133.58



Haibike All Trail

RRP: £4499

Electric Bike Access (high tax bracket): £3059.32

Savings: £1439.68

Electric Bike Access (high tax bracket): £2609.42

Savings: £1889.58



Employee savings



Raleigh Pioneer

RRP: £485

Electric Bike Access (standard tax bracket): £329.80

Savings: £155.20

Electric Bike Access (high tax bracket): £281.30

Savings: £203.70



Lapierre Sensium 300

RRP: £1099

Electric Bike Access (standard tax bracket): £747.32

Savings: £351.68

Electric Bike Access (high tax bracket): £637.42

Savings: £203.70



Lapierre Zesty 3.9

RRP: £1799

Electric Bike Access (high tax bracket): £1223.32

Savings: £575.68

Electric Bike Access (high tax bracket): £1043.42

Savings: £755.58



Post rental agreement options



Return – return the bike at no cost.



Extend – at this point a new agreement starts between Electric Bike Access and the employee at no cost. After five years the bike is owned outright by the employee via a transfer of ownership.



Upgrade – return the bike at no cost and upgrade to the latest model. The employee rents the bike under a new rental agreement over 12 months and saves the NIC and tax on the value of the new bike.



Commercial benefits to the employer

The business will benefit commercially by saving the National Insurance contributions on the total value of the rental agreements running. This is equivalent to 13.8% savings on the full price of each agreement.

The examples below are based on the 12-month rental period:

Hire value to the employee	Employers savings(during 12 - month rental agreement)
£2250	£310.50
£2699	£372.46
£4499	£620.86



Why use Electric Bike Access for your employees?

Electric Bike Access is a market leader in providing electric bikes through government backed salary sacrifice. For employees we have a bike to suit all requirements from our brands Raleigh, Haibike and Lapierre. For the employer we offer a unique service tailored to each business including payment and delivery options. We offer a direct relationship with the manufacturer and total control through a digital platform, set parameters and track repayment progress.

Our sign-up process is hassle-free and paperless. Employers will have support through a dedicated account manager, flexible payment options and complete control of the agreements thorough an online portal. By joining Electric Bike Access employers will save on NIC as well as having happier and healthier staff.

Once an order is placed through the online shop, employees will have the choice of delivery. Our bikes can be delivered to work, home or through click and collect from any of our partnering independent bike retailers. Employees will have access to support at every step, with a full customer service and warranty support from our Nottingham based teams.

The savings are clearly set out in the Electric Bike Access savings calculator. The employee saves 32% (lower tax bracket employees) and 42% (higher tax bracket employees) on the retail value of the bike.

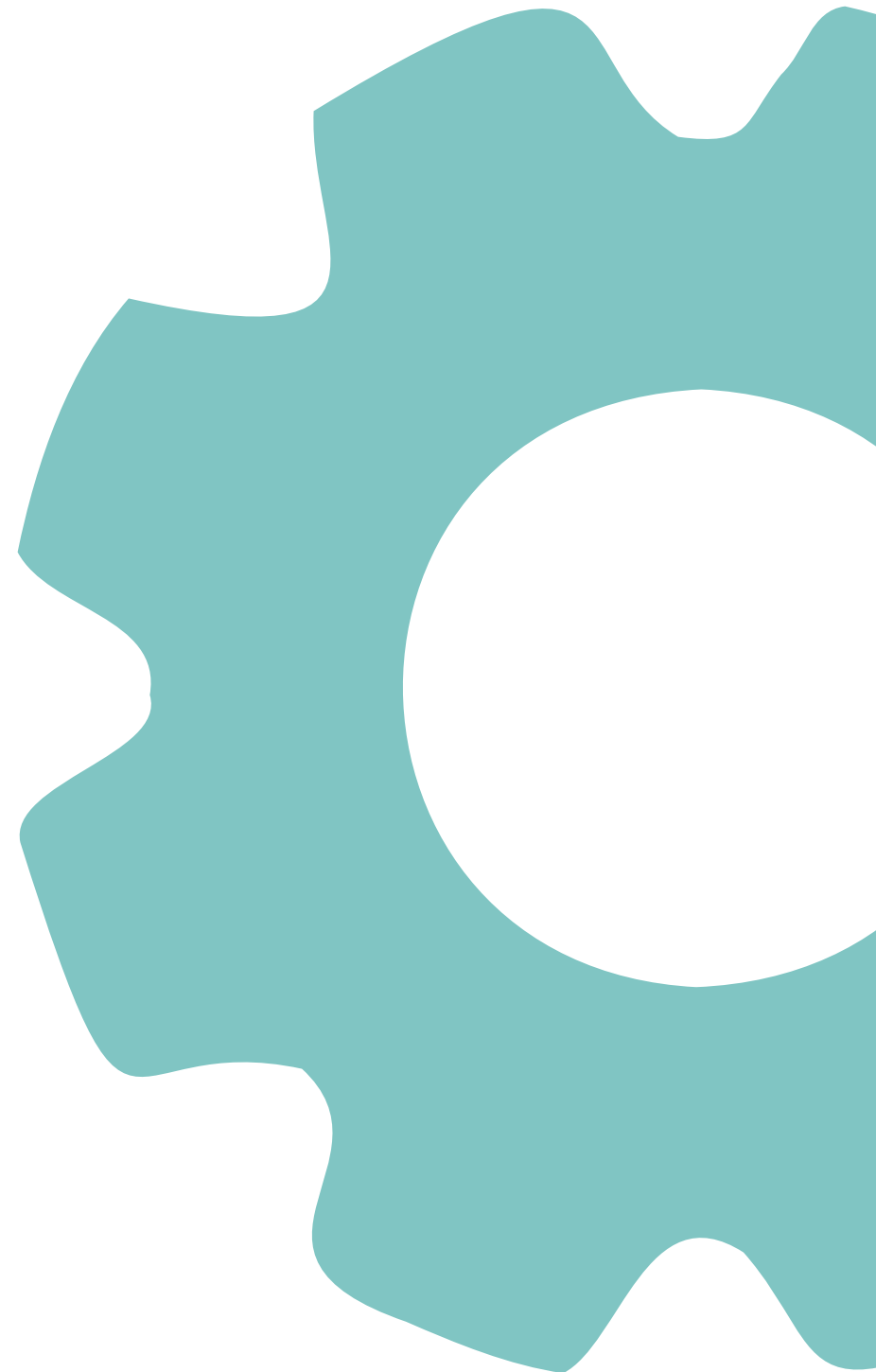


How it works

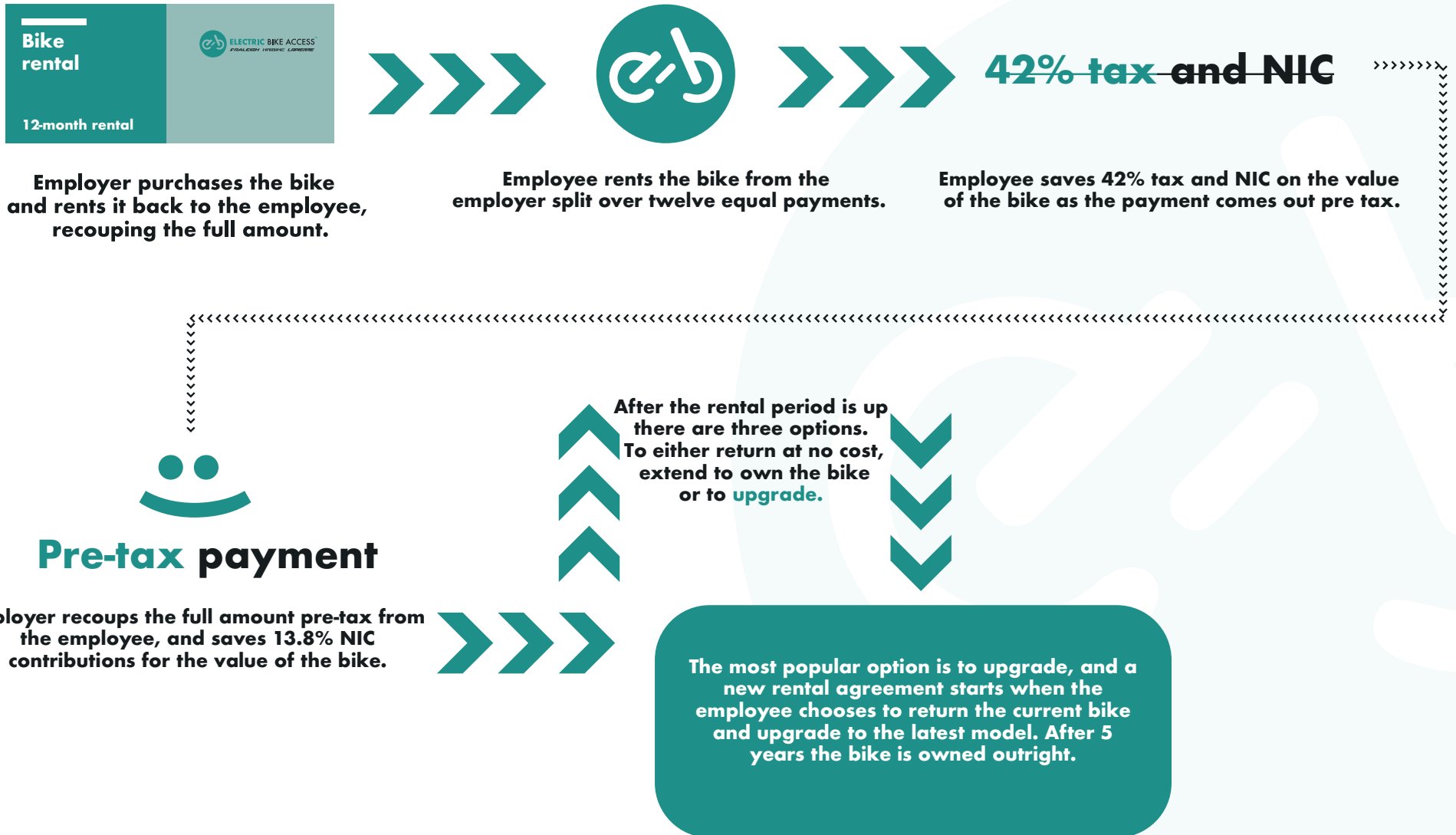
The employer first registers with **Electric Bike Access**. Registering is an entirely **digital process**, only takes a few minutes and is completely **free**. Employers can set the parameters for employees, such as the maximum value of the bike and the accessories. Once registered employers will receive a log-in to the unique digital platform, where you can access all the tools required to share the benefits of the scheme with employees.

Once the employee has visited **Electric Bike Access** and has decided on the electric bike and accessories they would like, a short online form is completed and sent to the employer for approval. Your business purchases the bike and recoups the full cost from the employees.

Once approved, the employee can choose where they would like the bike to be delivered. The repayments are taken from their **pre-tax salary**, after 12 months the employee is given three options to either return, extend or upgrade. The employer will have saved **13.8%** on the value of each rental and the employee will save up to **42%** dependent on their tax bracket.



Savings - employee and employer



Without salary sacrifice



With Salary Sacrifice



The graphic above shows a comparison between the **conventional** way of getting a bike (or any commodity) and the **tax-efficient** way.

FAQ – employer

Who owns the bike?

Electric Bike Access own the bike until the rental agreement has ended and the employee has signed the transfer of ownership agreement. Although we own the bike in the same way a lease works the employee is liable for the bike and we recommend taking out insurance. Find out more on our website.

What happens if an employee leaves during a rental period?

Following a cooling off period of 14 days, the contract cannot be cancelled, and the employee is legally obliged to pay back the salary sacrifice amount in full without any tax exemptions if they leave the business.

Why offer Electric Bike Access?

It's simple, happier healthier staff result in better employee retention and a more motivated work force. It is proven that cycling can reduce stress, is better for the environment and is a cost-effective alternative to commuting via a car or public transport.



FAQ – employer

Why choose Electric Bike Access?

We offer a hassle-free process, a direct relationship with the manufacturer and support from a dedicated team here in the UK.

You will have complete control through your own portal which offers the ability to set limits, approve and track all agreements. The sign-up process is fast and free and once orders are placed and approved we offer free next day delivery to an address of your choice.

All you have to do is adjust the salary to take the monthly amount from the employee's payroll, we do the rest.

Are there payment options?

Yes, on request we can support with options to spread the cost for the business.



FAQ – employer

What is the process for the employee and employer?

1. At **Electric Bike Access** registering is an entirely **digital process**, only takes a few minutes and is completely **free**. You just need information on your business i.e. address, number of staff and VAT number.
2. Once registered employers will receive a log-in to the unique digital platform, where you can access all the tools required to share the benefits of the scheme with employees. This is also a dashboard for keeping track of agreements, pending or running.
3. Once the employee has visited **Electric Bike Access** and has decided on the bike and accessories they would like, a short online form is completed and sent to the employer for approval.
4. Once signed off both the employer and employee get a confirmation email. The bike and any accessories are sent to an address of the employees choosing and the repayments start.
5. We support both the employer and employees at every step. We provide full customer service and warranty support from our Nottingham based teams, to tracking rental agreement progress and repayments for the employer.
6. As the rental agreement comes to an end, we will contact both the employer and employee with end of agreement options.
7. After 12 months the employee is given three options to either return, extend or upgrade. Most employees choose to upgrade their bike. We collect the old bike at no cost, the employee chooses the new model and any accessories, and a new rental agreement starts when the new bike is sent.

FAQ – employee

Why does the price of the bike on my payslip show the full price of the bike split over 12 payments?

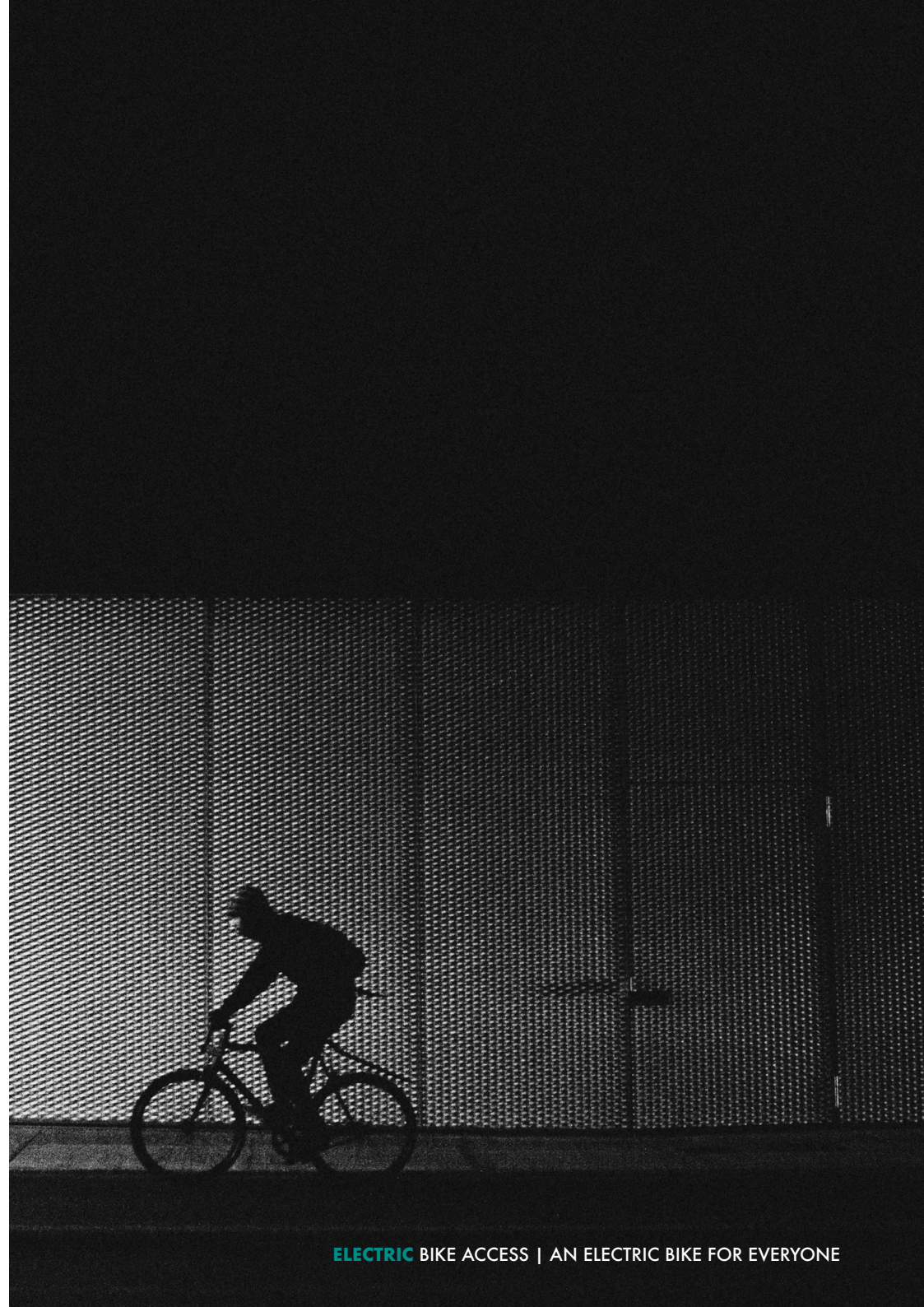
Electric Bike Access is a salary sacrifice scheme that means an employee agrees to give up an amount of their pre-tax salary in exchange for an electric bike. The value of the bike is shown on the left-hand side of your payslip (**pre-tax section**). The savings are calculated by reducing the amount of National Insurance and tax the employee would pay towards the value of the bike.

If a bike worth £2000 at full price for the basic rate tax payer was purchased, a saving of **32%** would be made through the scheme. **20%** would be saved through income tax and **12%** would be saved through NIC. This equates to **£640** in savings. The reduced amount is split into 12 payments back to the employer.

What happens after the 12-month rental period?

During the rental agreement Electric Bike Access owns the bike. After the **12-month** agreement the employee has options to **return at no cost, upgrade to the latest model or choose to extend the agreement to own the bike**. If employees choose to extend the agreement, there is no cost involved apart from a **transfer of ownership after 5 years**. The bike is owned outright by the employee.

If they choose to upgrade we collect the old bike free of charge and a new rental agreement starts when the new bike is delivered.



FAQ – employee

Who are electric bikes for?

They are for everyone! Electric bikes are for anyone who wants to enjoy cycling that might be put off by particularly hilly terrain, a long commute or carrying a heavier load. Electric bikes make cycling accessible to everyone and remove the barriers that usually prevent people from getting on their bike.

How fast can you go on an electric bike?

Under current regulations electric bikes can provide assistance up to 15.5mph. Although by putting in more energy yourself, it is easily possible to reach higher speeds.

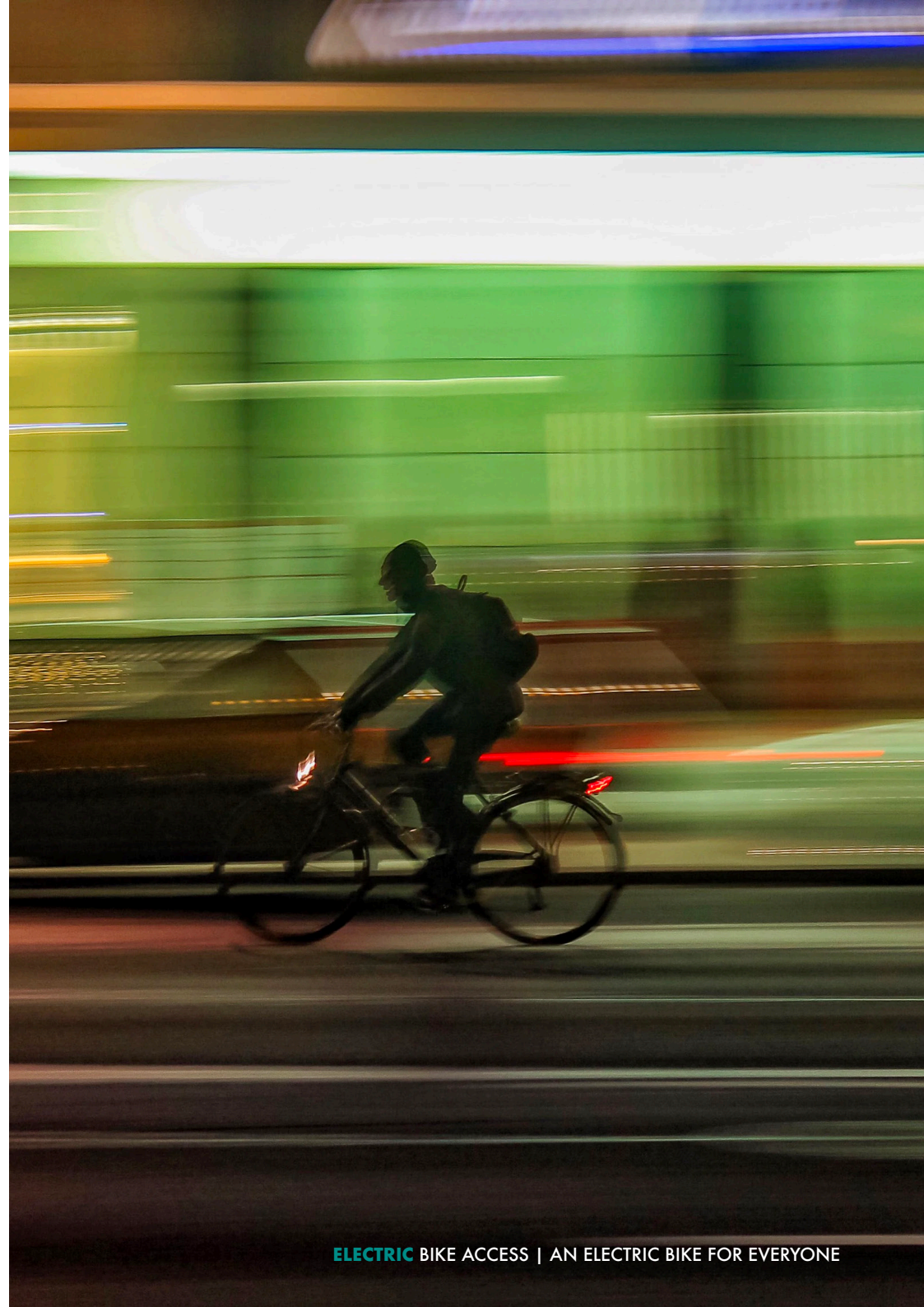
Can electric bikes save me money on my commute?

Your electric bike could save you money on your commute but it all depends on the distance you usually travel, whether you travel by car or public transport and which of our electric bikes you choose. We believe that in many cases it can be more cost effective to commute on an electric bike and have certainly had this feedback from our customers.

How far can I travel on one charge?

The distance that you can cycle on your electric bike in one charge will depend on the electric bike system, the battery capacity and the level of assistance that you select while riding. Other factors such as your weight, luggage, weather conditions and terrain will also influence the bike's range.

Most of our electric bikes have a range of between 40km and 100km per charge.



Customer support information

Website: www.ebikeaccess.co.uk

Email: info@ebikeaccess.co.uk

Warranty: support@ebikeaccess.co.uk

Tel: **01773 532600**

Our support teams are available Monday – Fridays 8am to 6pm. If you have any questions about **Electric Bike Access** please email or call and we will support you at any stage of the process.

Why not sign up to our monthly newsletter to find out about new products and more benefits of Electric Bikes Access.



THANK
YOU!
/