

74%

of UK adults state they have felt stressed about their finances in the last 12 months.

50%

of employees don't fully understand their benefits offering.

MoneyFit

Financial Wellbeing

"Financial wellbeing is about feeling in **control** of your money and **hopeful** about your financial future"

The National Forum for Health and Wellbeing at Work

ONLY 10%

of employees state that their employer has asked them if they would like support with their financial wellbeing.



WINNER

employee benefits AWARDS

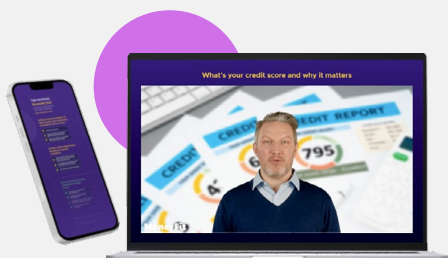
Best Financial Wellbeing Solution

WINNER

corporate adviser awards

Best Health and Wellbeing Solution

Improve **financial literacy** through engaging content, videos and interactive tools



MoneyFit Classes Videos

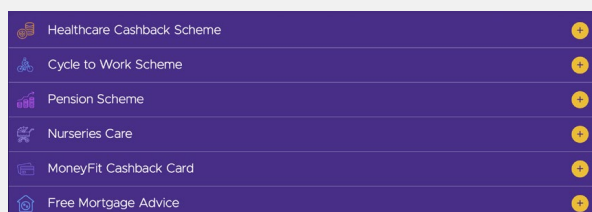


Interactive Modelling Tools



Help and Support

Improve **awareness and take-up** of money-saving employee benefits



Employee Benefits Communication

Earn **cashback on everyday spend** with the MoneyFit Cashback Card



ASDA B&Q B&M Clarks currys John Lewis PRIMARK Sainsbury's Waitrose NEW LOOK

MoneyFit

Financial Wellbeing



Improve **financial literacy** through engaging content, videos and interactive tools



Improve **awareness and take-up** of money-saving employee benefits



Earn **cashback** on everyday spend with the MoneyFit Cashback Card



14 on-demand video classes



117 definitions in the glossary of terms



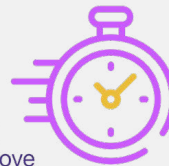
38

links to carefully selected learning resources



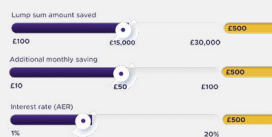
27

recommended actions to improve MoneyFitness



03

interactive modellers



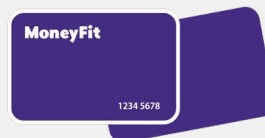
18

employee benefit descriptions



80

cashback retailers for the MoneyFit cashback card



Earn up to **14.5% cashback** at over **80 popular retailers**

- Easy-to-use, plastic-free digital VISA debit card
- Add to Apple Pay and Google Pay
- Top-up, spend and receive cashback at over 80 retailers
- View card balance, cashback and top-up via the app

ASDA

B&Q

Boots

Clarks

currys

John Lewis

PRIMARK

Sainsbury's

Waitrose

NEW LOOK