

HIGH-RESOLUTION IMAGE GUIDELINES FOR AWARD ENTRIES

This short guide explains how to prepare and submit high-quality images to represent your award entry in the best possible light. Clear, high-resolution, landscape images are essential for print and on-screen, whereas lower-resolution images will appear blurry or pixelated.

What is a high-resolution image?

A high-resolution image contains many pixels, which makes it sharp and detailed, even when it's projected very large.

**Recommended for best results (print and on-screen):
3000–4000+ pixels on the longest side**



Image Size: 3648 × 2432 pixels

YES



Image Size: 1474 × 1100 pixels

NO

Why high-resolution is important?

Your image may be used across various formats to promote your success:

Printed materials (magazines, light boxes, brochures)
Large projections on-screen
Award presentations and videos

LOW-RESOLUTION



Appear blurry when enlarged
Show visible pixels (pixelated)
Lose important detail

HIGH-RESOLUTION



Stay sharp when printed large
Look professional
Represent you/your work in the best light

Use the original file

Always upload the **original image file**.

Each time an image is edited, compressed, re-saved, or whatsapped, its quality is **reduced**.

AVOID 

Screenshots

Images downloaded from messaging apps
(WhatsApp, email previews, etc.)

Images copied from websites or social media

Edited or images re-saved multiple times

USE 

Original

Contact the photographer who shot
the original image(s)

What orientation should I use?

A landscape image is required because it will fit the ratio of our screen.



✓
YES



✗
NO

How do I take a high-resolution photo with my phone?

You can use your smartphone to take images suitable for print and on-screen.

Use the **rear camera** (higher quality)

Clean the lens before shooting

Use good lighting (natural light works best, avoiding shadows)


Use a clean background


Turn your device horizontally - remember you need to shoot a **landscape** image

Avoid zooming in digitally (this reduces quality)


How do I set my camera to take high-resolution images?

On iPhone (iOS)

- 1. OPEN SETTINGS**



Settings
- 2. TAP CAMERA**


Camera

✓ Tap the Camera button.
- 3. TAP FORMATS**


Apple ProRAW

Allow Apple ProRAW (if available) for maximum detail to stay the maximum detail, on iOS.

ENABLE ProRAW
Turn on Apple ProRAW (if available) for maximum detail
- 4. SET HIGH EFFICIENCY**


High Efficiency

Automatically High Efficiency, refiles automatically in ProRAW and saves in HEIF format.

ENABLE ProRAW
Turn on Apple ProRAW (if available) for maximum detail

On Android (Android OS)

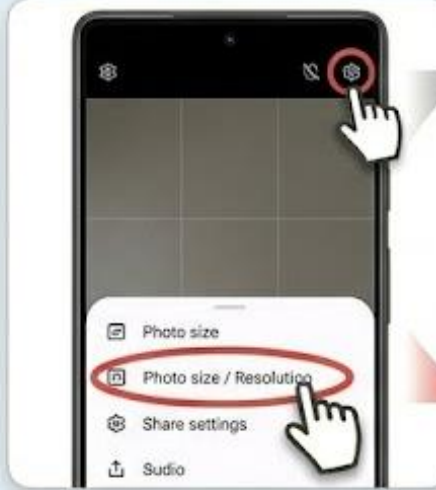


- 1. OPEN CAMERA**


Photo size / Resolution

SELECT HIGHEST
Choose highest resolution setting for detailed photos
- 2. TAP SETTINGS (⚙️)**


Tap the fingerprint option.
- 3. FIND PHOTO SIZE**


12MP	12MP
Photo size / Resolution	48MP
	64MP
Best	Maximum

SELECT HIGHEST RESOLUTION
Select the highest available resolution (e.g., 64MP)

How do I check the image resolution?

On Microsoft Windows

1 RIGHT-CLICK IMAGE FILE

2 CLICK PROPERTIES

3 GO TO THE DETAILS TAB

4 LOOK FOR DIMENSIONS

(LONGEST SIDE MUST BE AT LEAST 2000 PIXELS)

e.g., 3840 x 2160 is OK

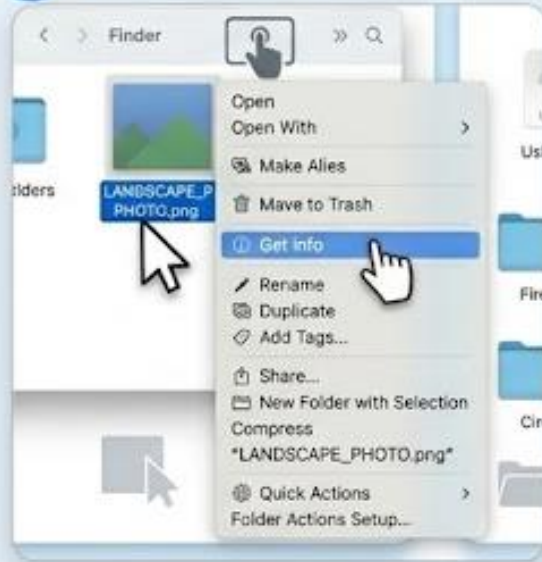
Property	Value
File name	LANDSCAPE_PHOTO.jpg
Size	28.81 KB
Created	11 Dec 2020, 00:02:30
Dimensions	3840 x 2160

If the image is under 2000px, it is not suitable.

How do I check the image resolution?

On MacBook (iOS)

1. FIND AND RIGHT-CLICK



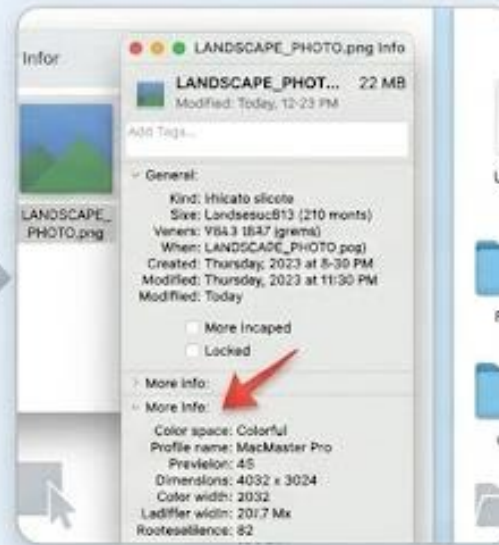
Right-click the image file and select 'Get Info'.

2. VIEW GET INFO WINDOW



The 'Get Info' window appears with various details.

3. EXPAND 'MORE INFO' SECTION



Click the arrow next to 'More Info' to expand it.

4. LOCATE DIMENSIONS



Look for the 'Dimensions' value (width x height).

If the image is under 2000px, it is not suitable.

How do I check the image resolution?

On My Mobile

On iPhone (iOS)

1. OPEN IN PHOTOS



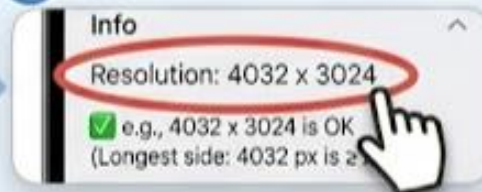
OPEN IN PHOTOS
Tap to open the image in the Photos app.

2. TAP THE INFO (i) BUTTON



✓ Tap the info button (i) on the bottom navigation bar.

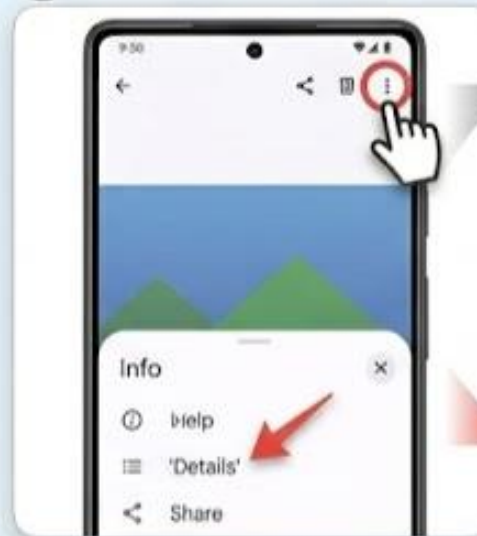
4. LOCATE RESOLUTION



LOCATE RESOLUTION
Look for the resolution values.
✓ e.g., 4032 x 3024 is OK
(Longest side: 4032 px is ≥ 2000 px)

On Android (OS)

1. OPEN IN GALLERY



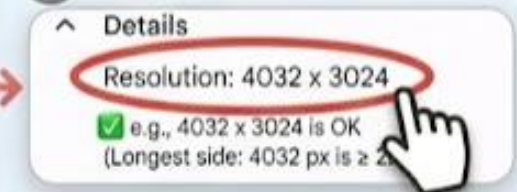
OPEN IN GALLERY
Open the image in your gallery or photo app.

3. EXPAND IMAGE DETAILS



✓ Tap the menu or info option.

4. LOCATE RESOLUTION



LOCATE RESOLUTION
Find the resolution values.
✓ e.g., 4032 x 3024 is OK
(Longest side: 4032 px is ≥ 2000 px)

If the image is under 2000px, it is not suitable.

Can I crop my image?

No. It is important to have some space or a border around the edges of the picture instead of cropping them yourself. Our team will handle the cropping when working with your images.

Original



✓
YES

Cropped



✗
NO



**PROFESSIONAL
BEAUTY
GROUP**

Need help?

Contact awards@thepbgroup.com